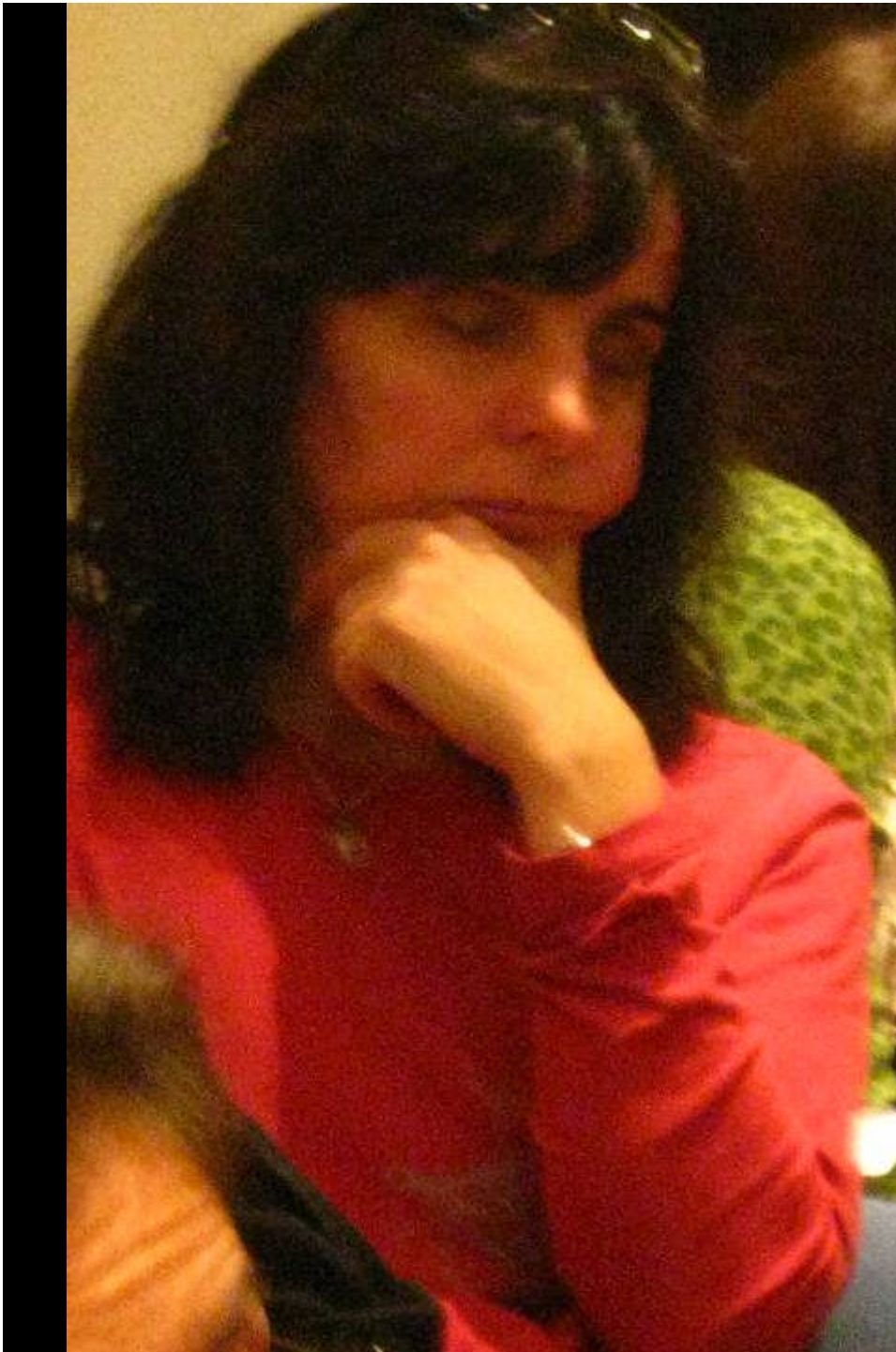


¡Muchas gracias!



**Por haber
compartido...**

Sueños y desvelos
(tal vez, más de los
primeros)





Ideas “raras”



**Trabajos en
equipo y...**

Trabajos forzados



**MANOS
A LA
OBRA**

Trabajo Práctico
Identificar impactos
del turismo

Consignas:

1. Dividimos en grupos de trabajo
2. Elegimos solo un sitio turístico concreto (real)
estamos los impactos que genera el turismo, directa
mente. Tratar que la identificación de
activa.



**Generalmente,
¡multinacionales!**



**Con visiones
integradas de
países queridos**



Vivencias personales

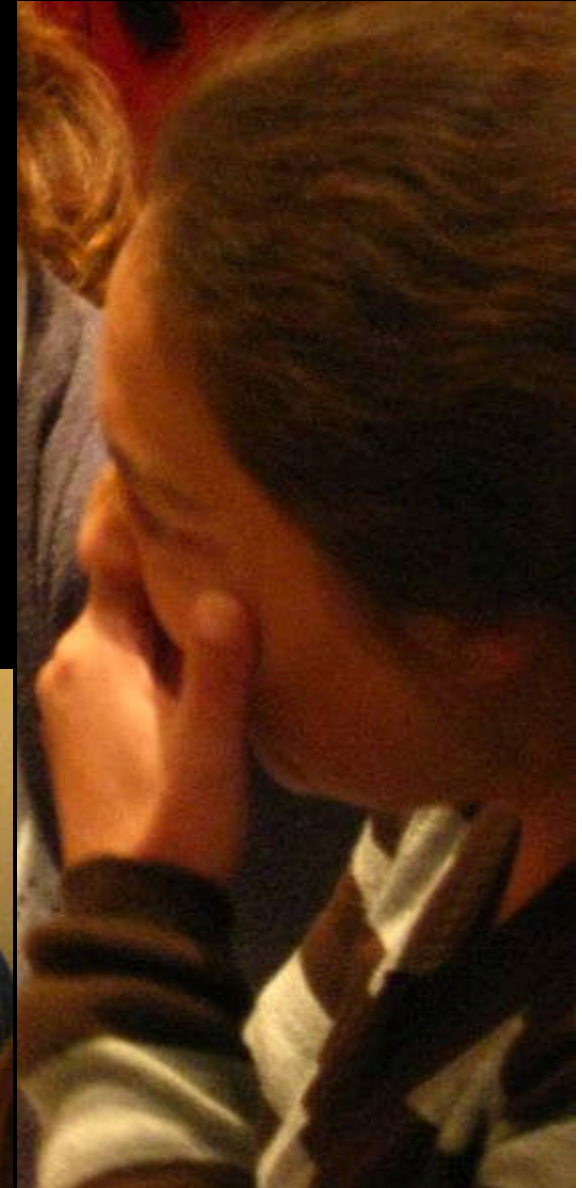


**A veces,
estremecedoras**



Con humor

Con pensamientos y reflexiones





**Sabiendo
escuchar**

Con debates





**Aunque se nos
pusieran los pelos
de punta**



Mmmm...

Mmmm...

**Y nos quedemos
dudando...**



O escribiendo...



Pensando...





Madurando nuevos desafíos

**Con la “capacidad de carga”
algo comprometida...**



A photograph of two women sitting at a table in what appears to be a meeting or workshop. The woman on the left is wearing a red jacket and glasses, looking towards the right. The woman on the right is wearing a grey cardigan over a white top and is pointing her right hand towards the left, as if pointing at a screen or document. The background is a plain, light-colored wall. The image is framed by black bars on the left and right sides.

**Muchas gracias
por el entusiasmo**



**Y por apostar a la
Cátedra UNESCO**

No son pocos los que necesitan esperanzas





FIN

The word "FIN" is written in large, white, serif capital letters, centered on a solid black background.

The End

The words "The End" are written in a white, elegant cursive font on a solid black background.

The End

The words "The End" are written in a white, serif font with a slight drop shadow, set against a dark grey background.

Produced and Released by
TWENTIETH CENTURY-FOX
FILM CORPORATION

The text is centered on a dark grey background. It begins with "Produced and Released by" in an italicized serif font, followed by "TWENTIETH CENTURY-FOX" and "FILM CORPORATION" in a bold, all-caps serif font.