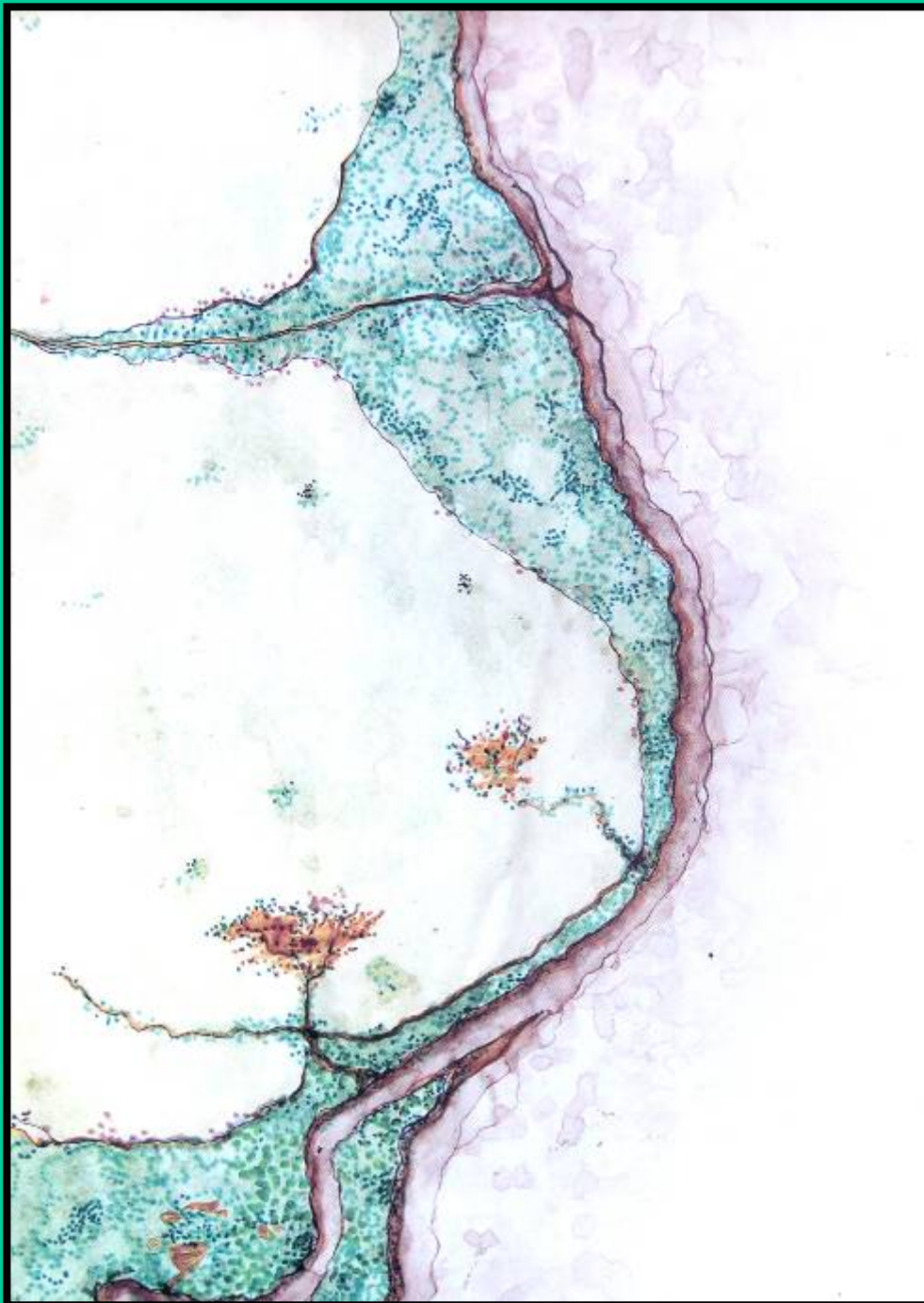
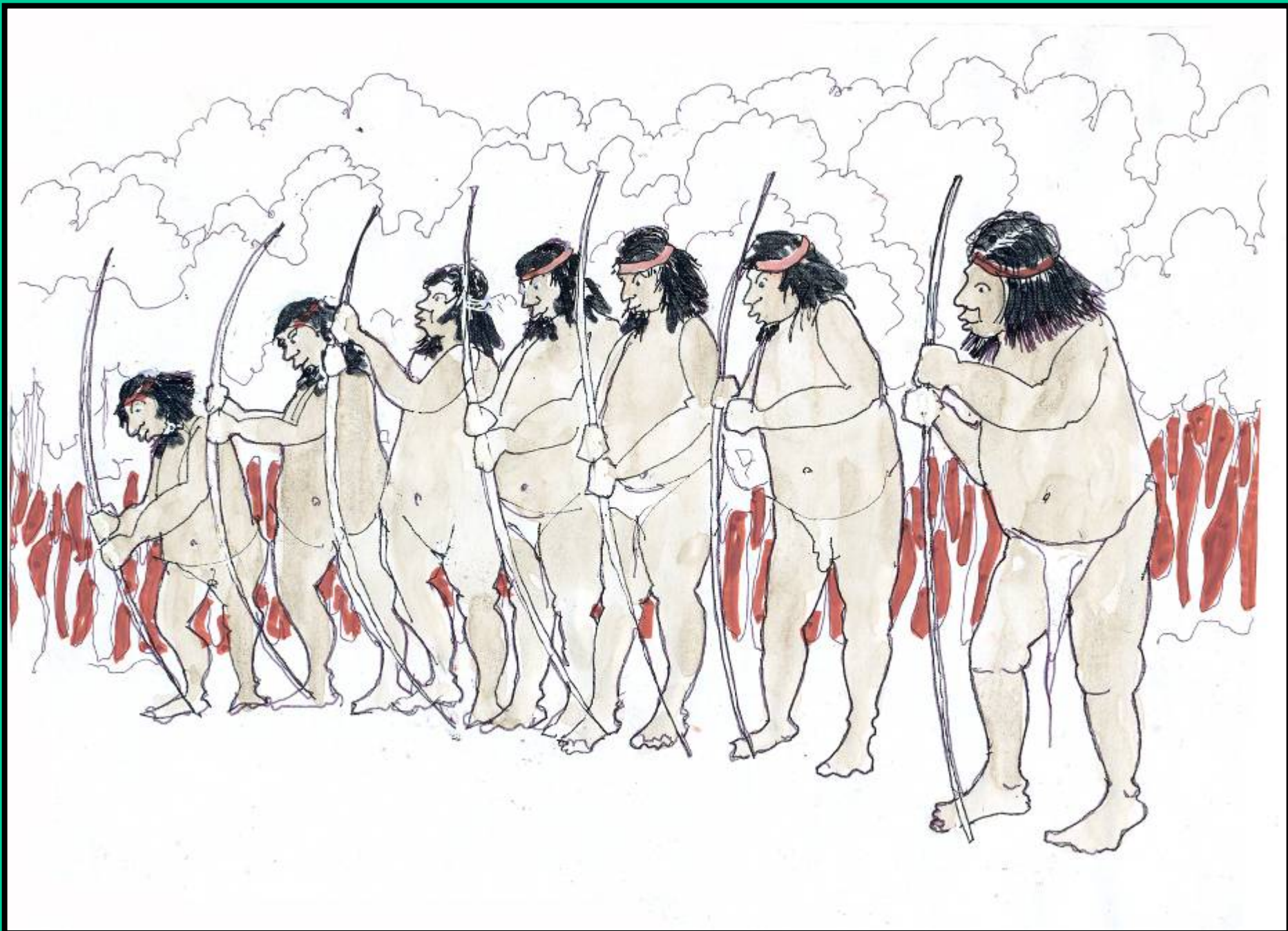


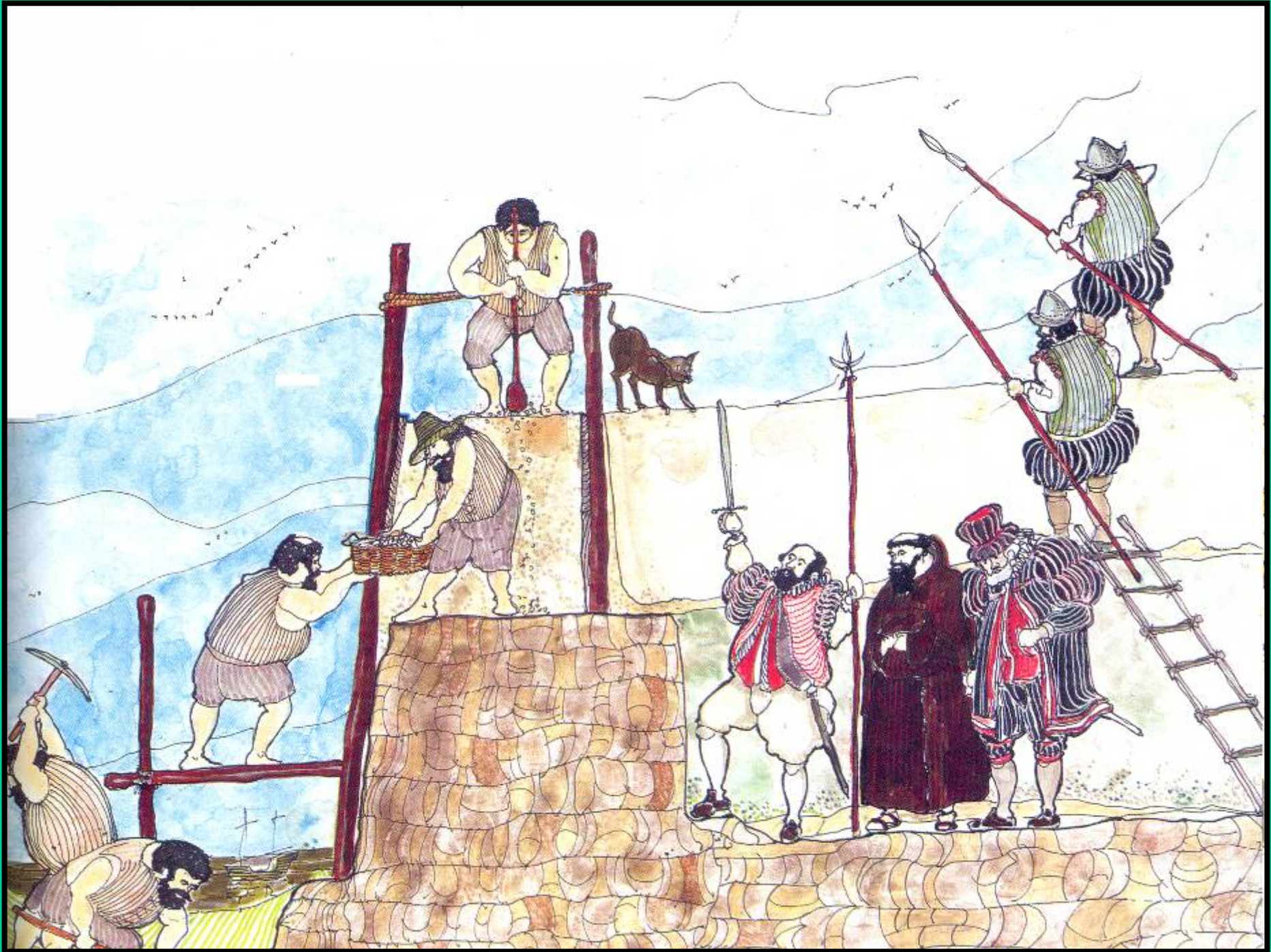
*MEMORIA,
CIUDAD
Y
PATRIMONIO*

Mayo 2008





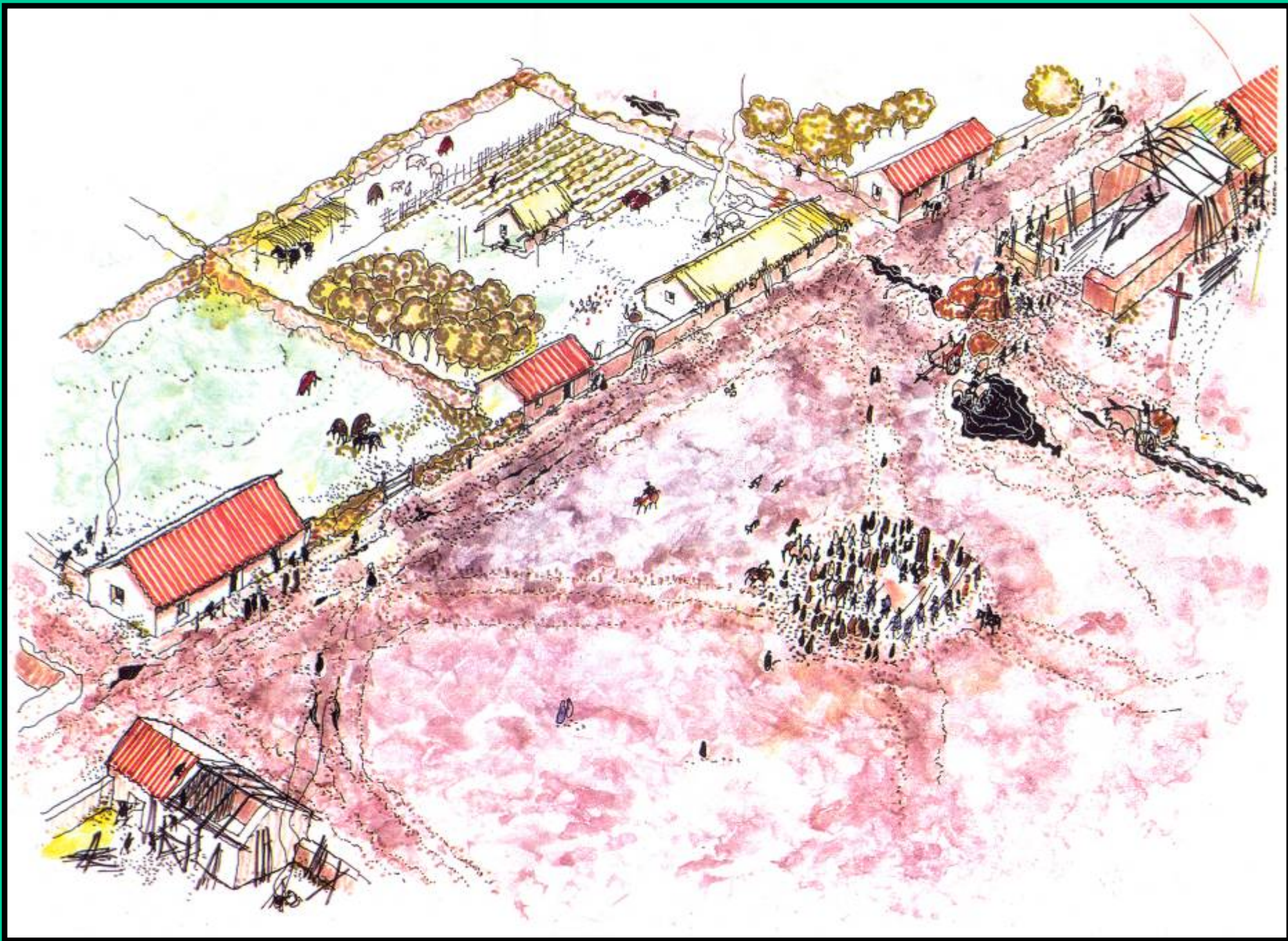


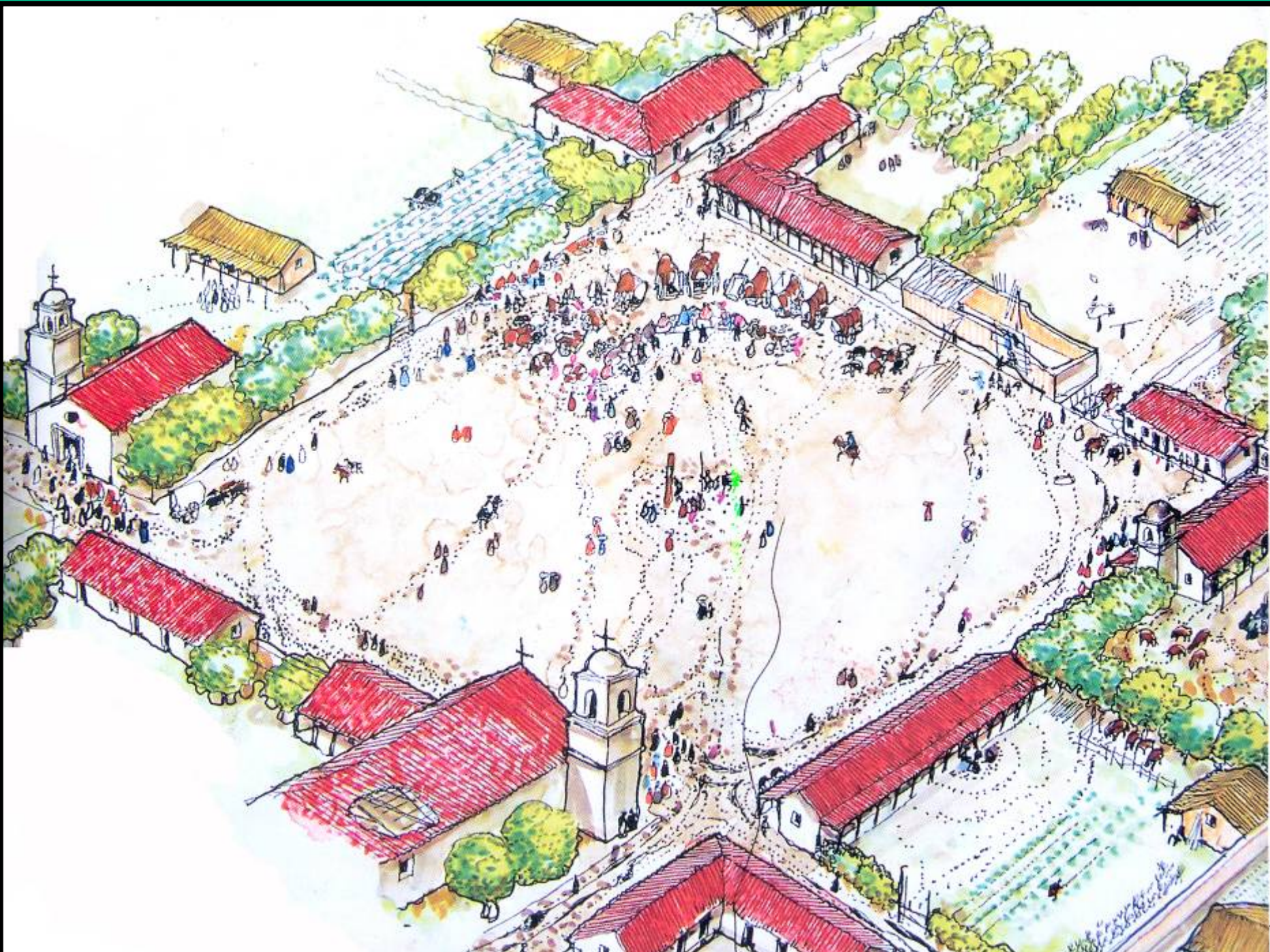






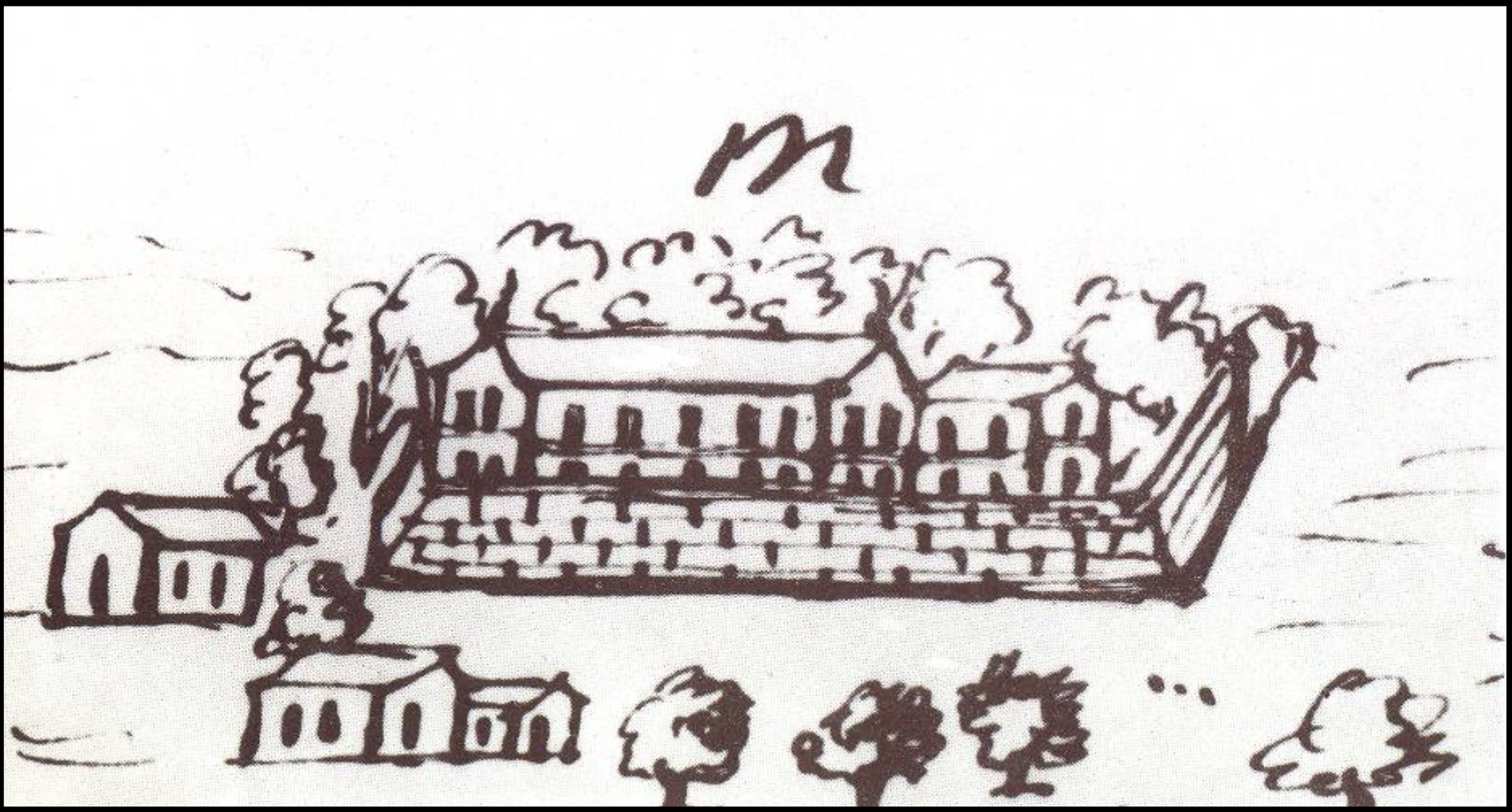








M



veus de la ville de bonofaire et de la croix

Cette ville est située à six cents lieues dans la rivière de Laplatia du côté du sud
Cet ville est assez grande mais est bien peuplée, mais quand il y plus il faut y aller
à cheval ou à cause de la pluie et quand il fait sec et qu'il vente il faut garder la maison
à cause de la poussière car il n'y a point de pluie pendant la saison est point rare

A rochelle ou de banque La chaloupe

B corps de garde

C capitaine ou son mets les nages de la compagnie

D hôpital du roy

E St dominique

F maison de la sénéchal

G les jésuites

H tour du fort

I fort

K Cathédrale

L Le couvent de la mercy

M Le village

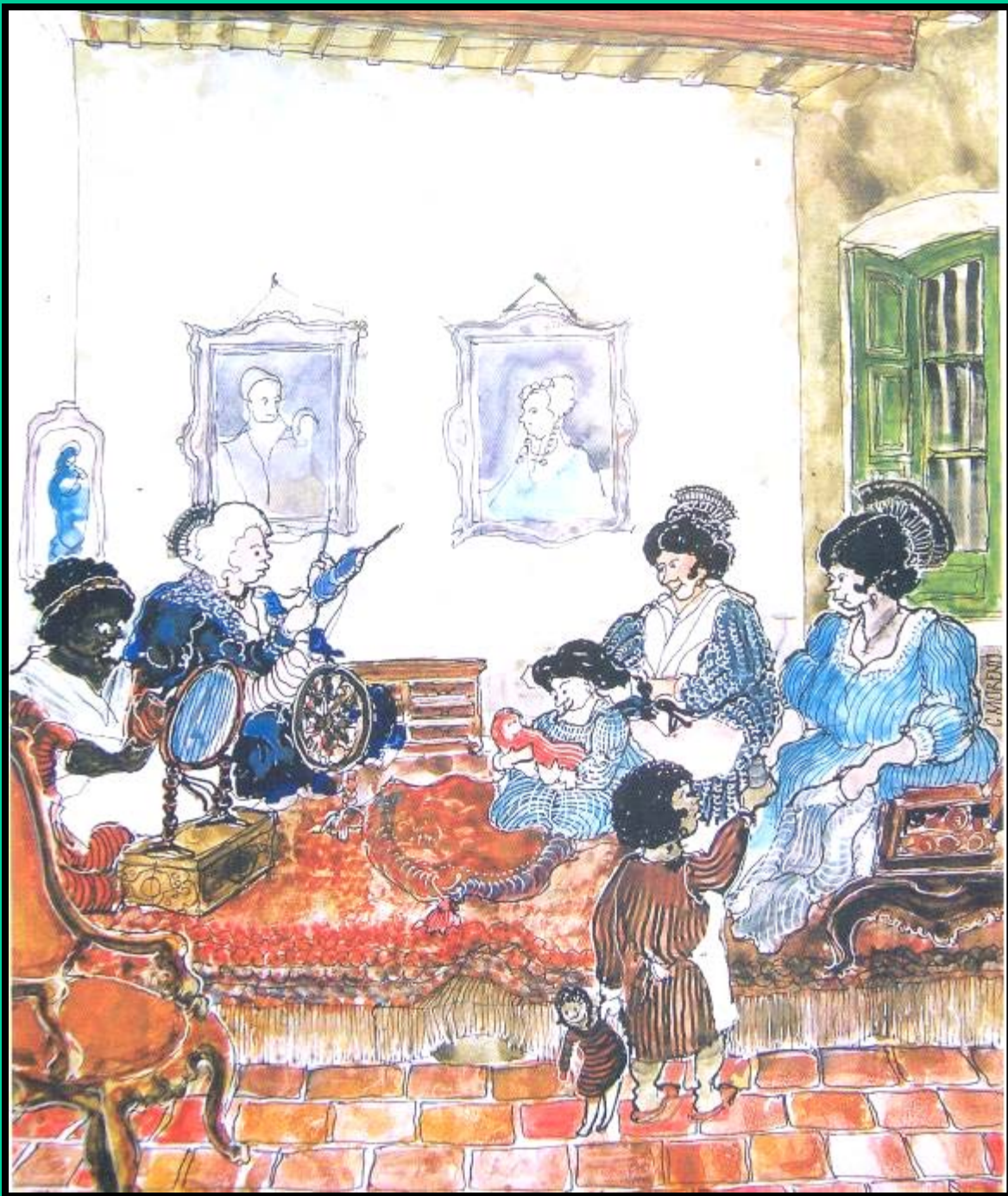


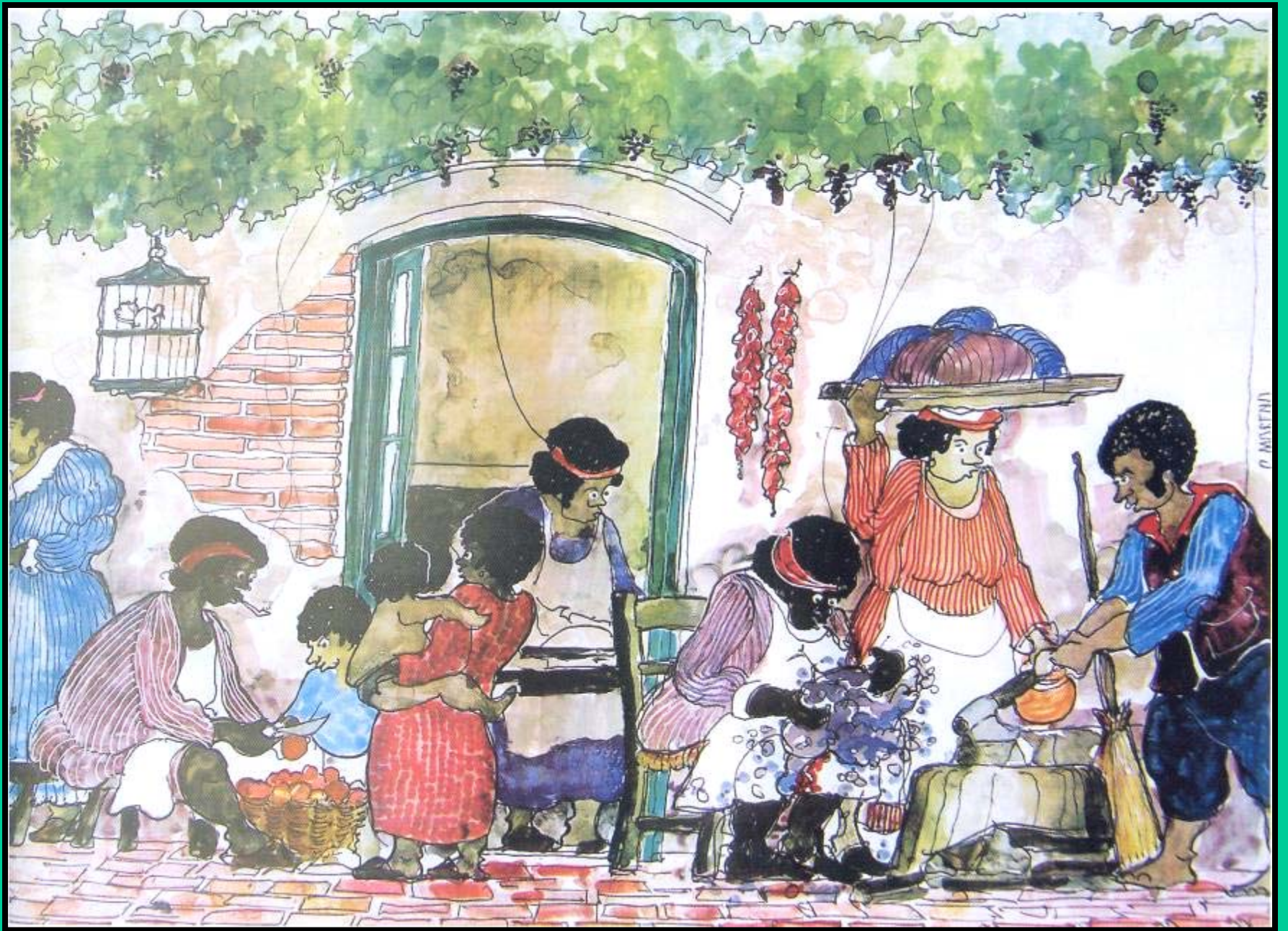
Le monde y est fort doux et fort habitable, mais les indiens y sont
insolens et féroces quand ils ont bu. Ce qui leur arrive très souvent









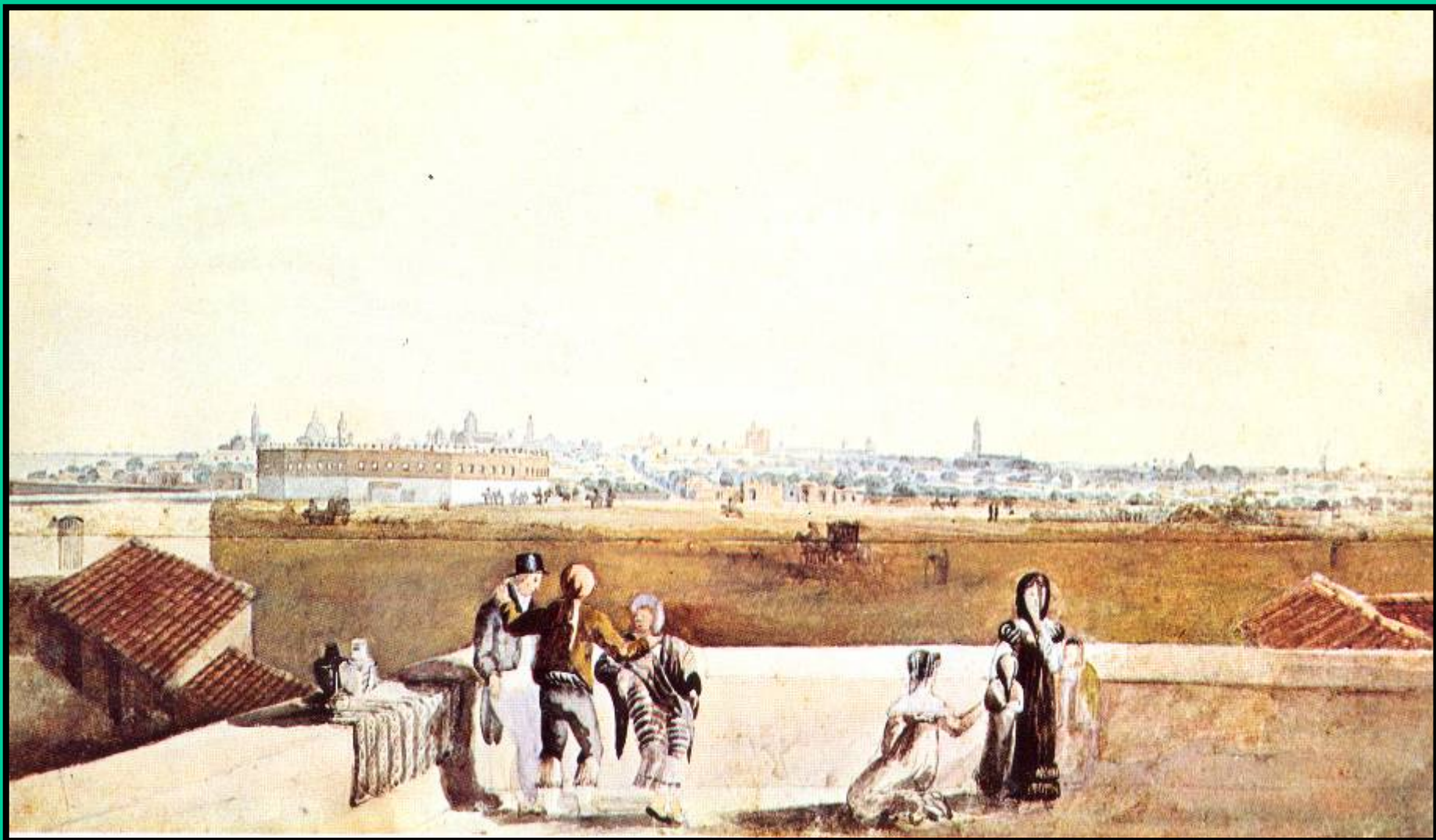


P. MASERATI







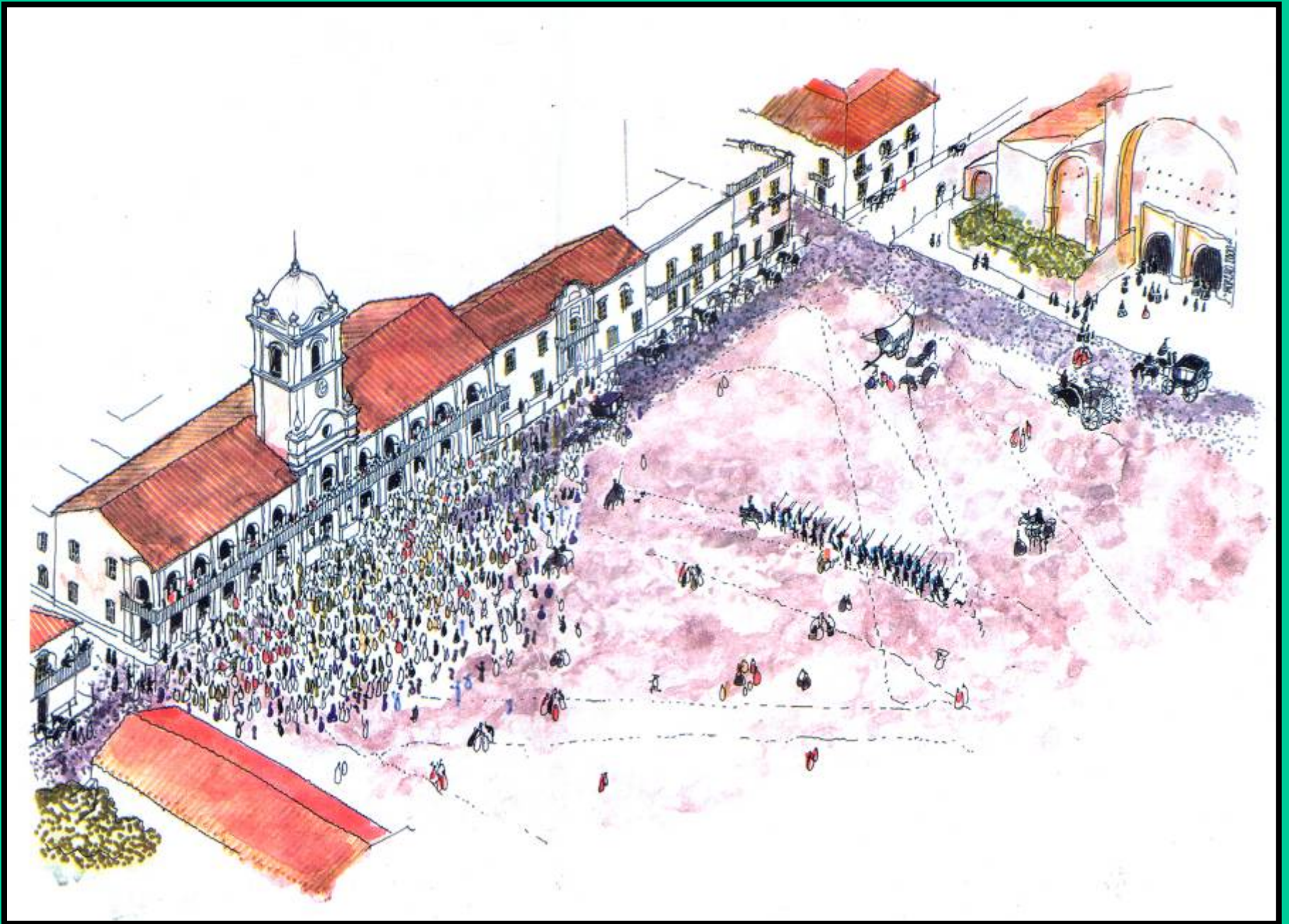




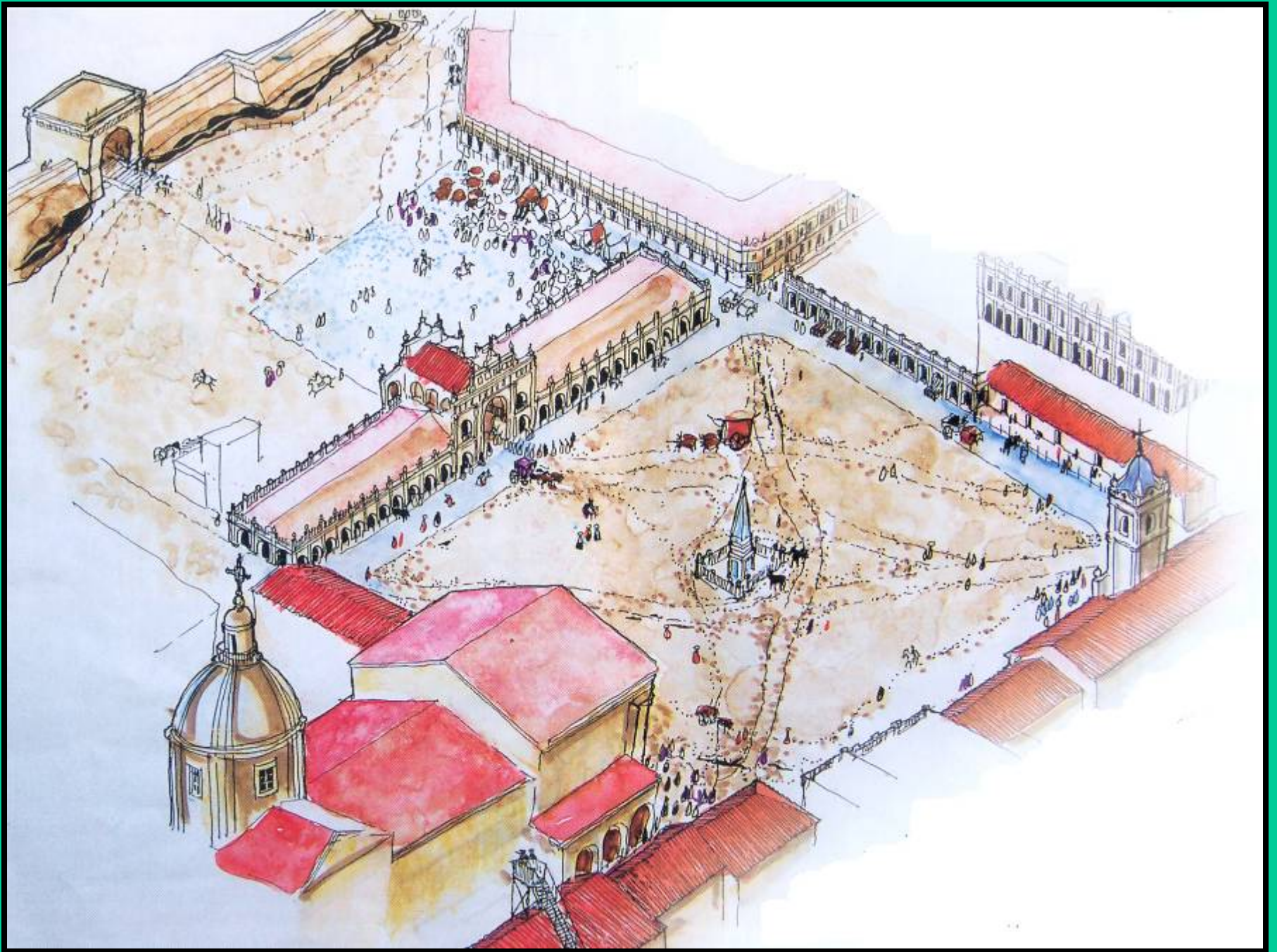
















GABUS
Reloxero
Suizo

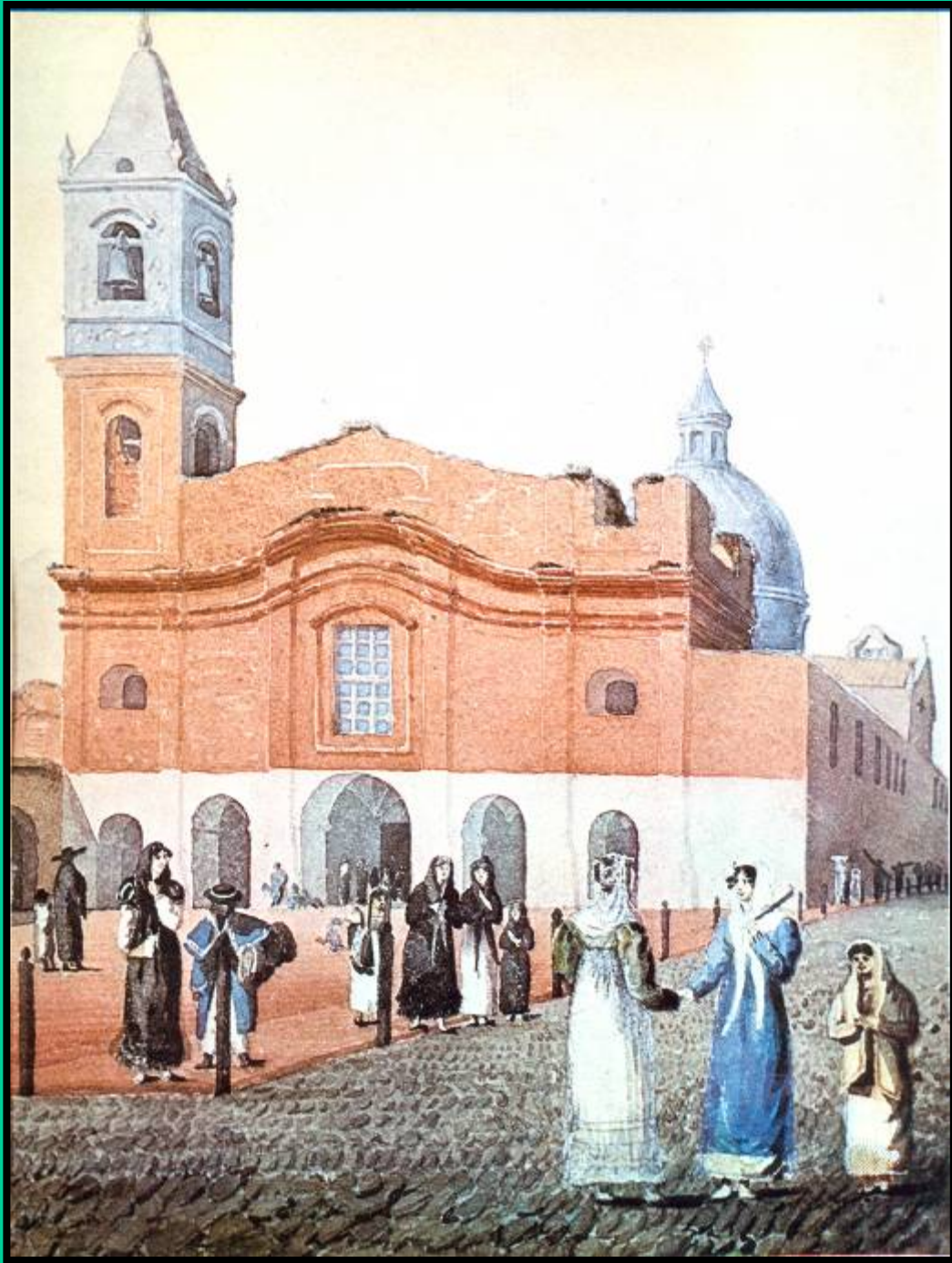


FABRICA
de
Sombreros
A. TARTIERE

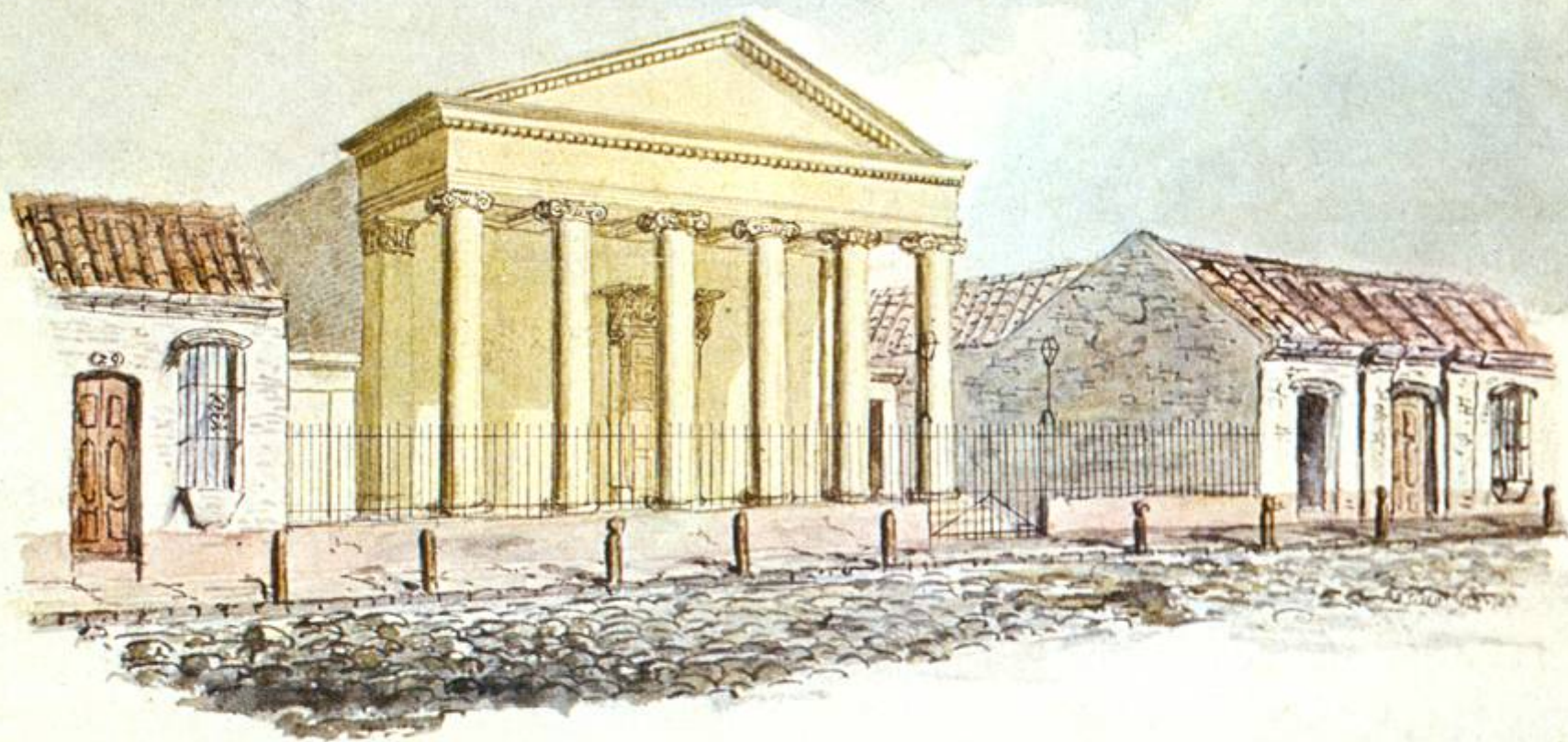
CALLE
del
PIATA

FABRICA
de
Sombreros
A. TARTIERE

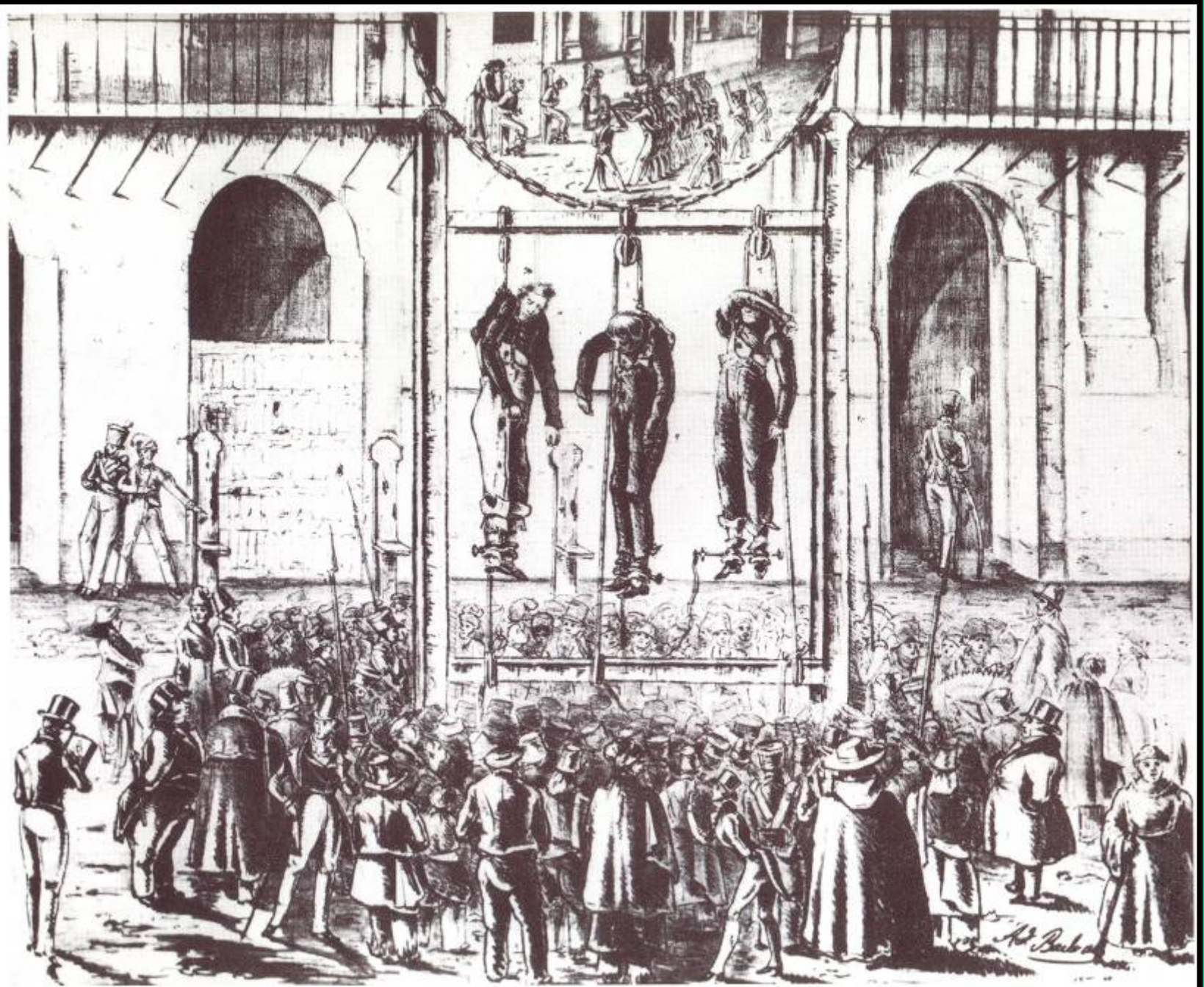


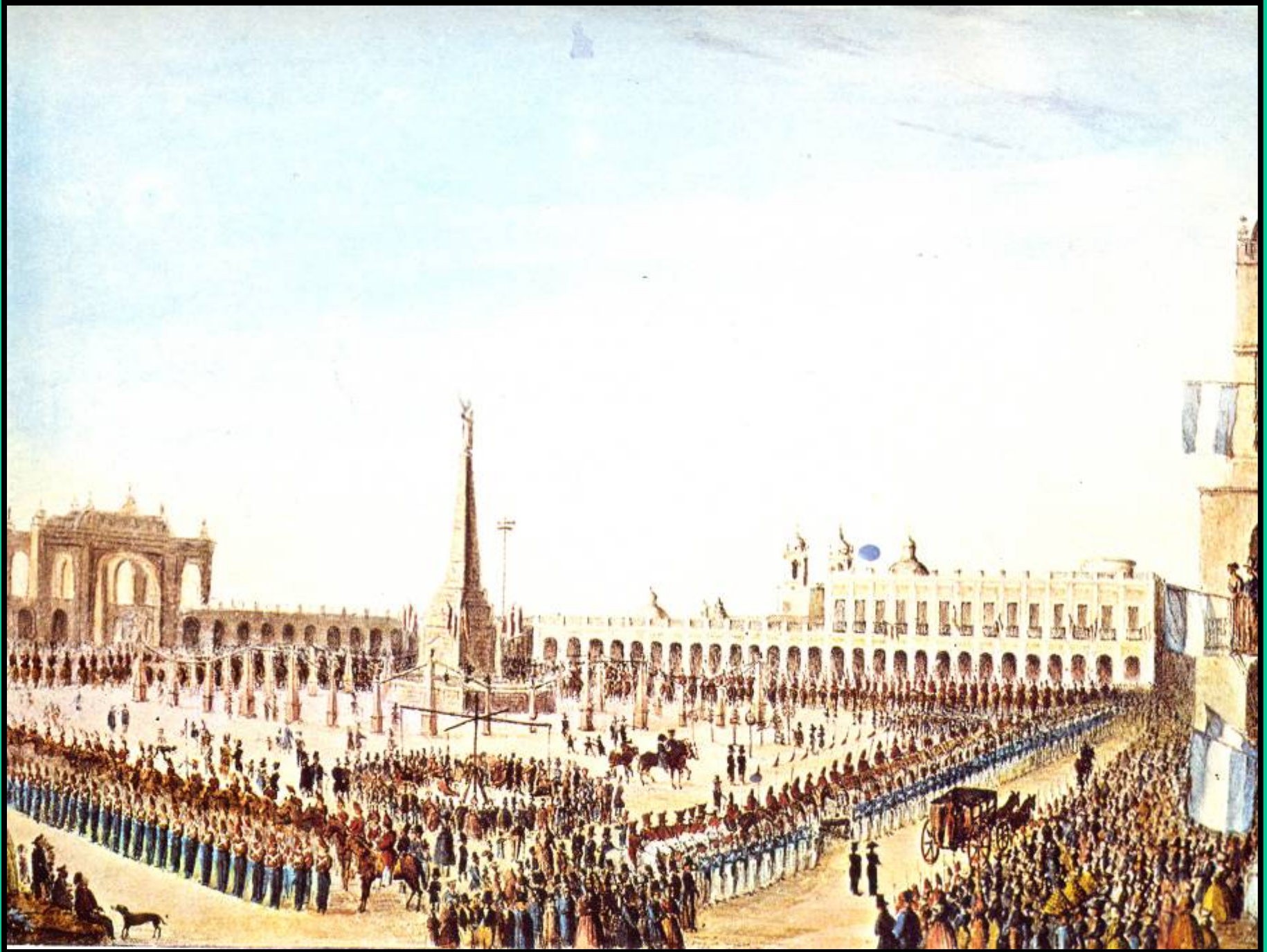


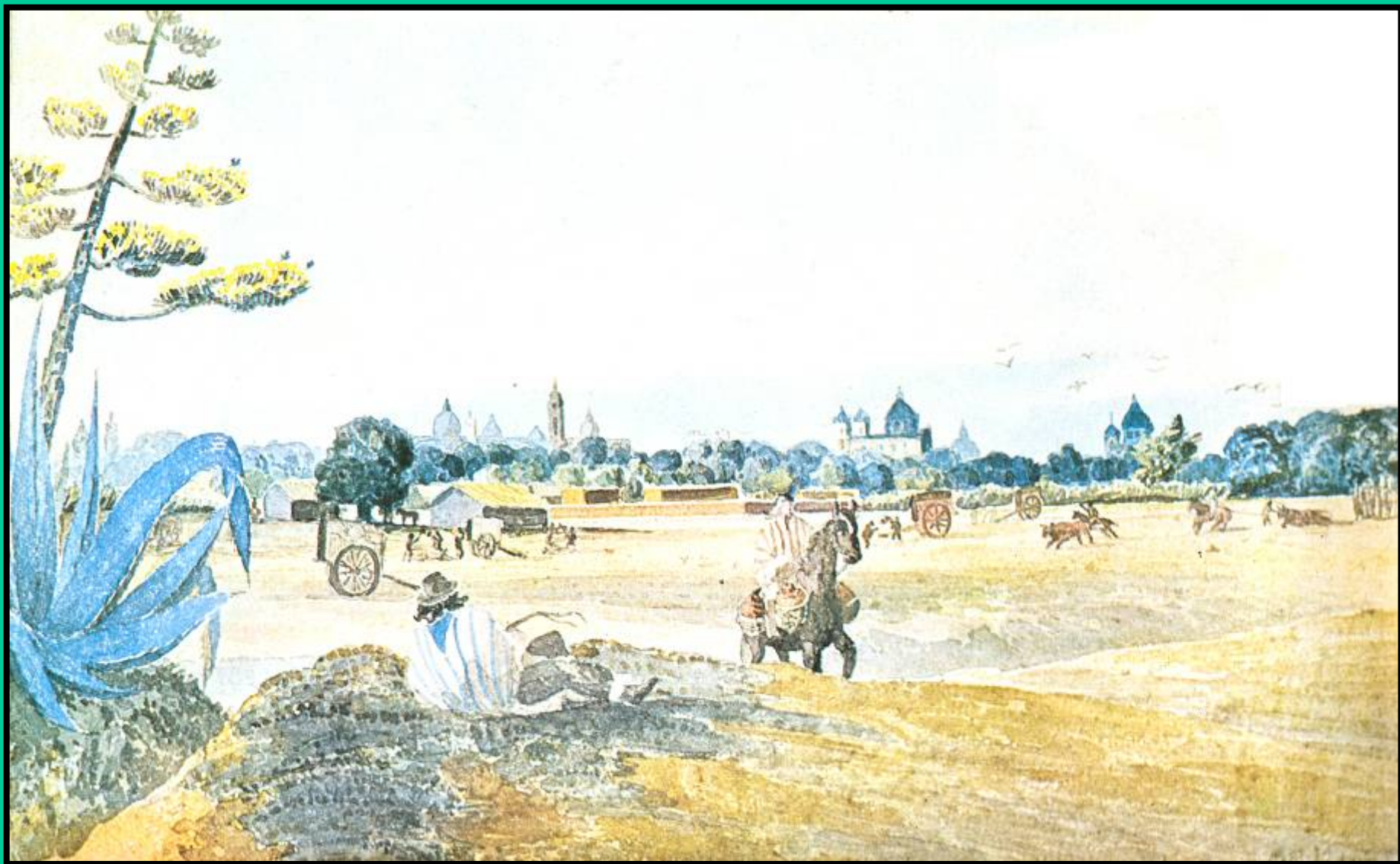


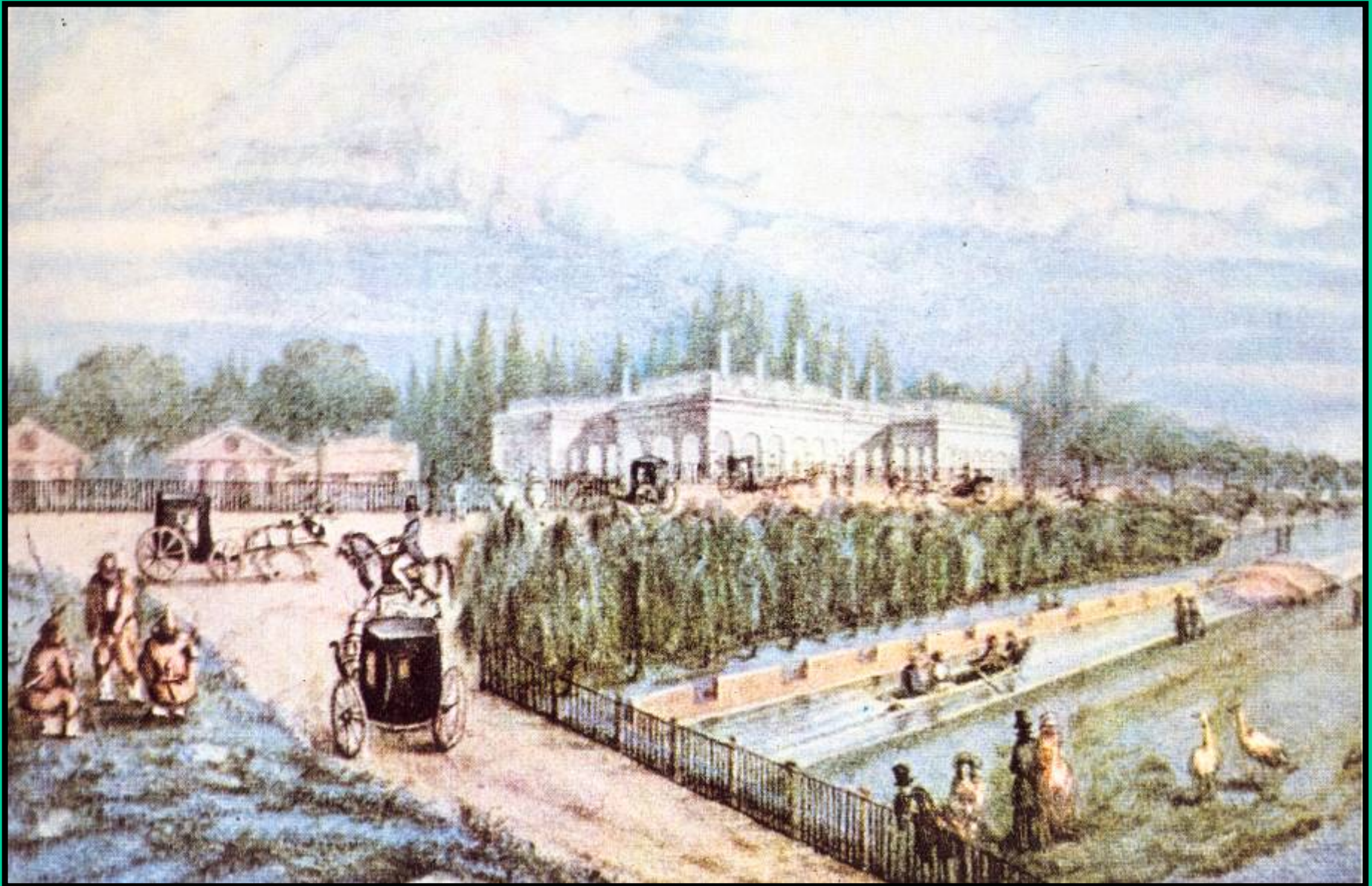


VIEW OF THE SCOTCH CHURCH BUENOS AIRES

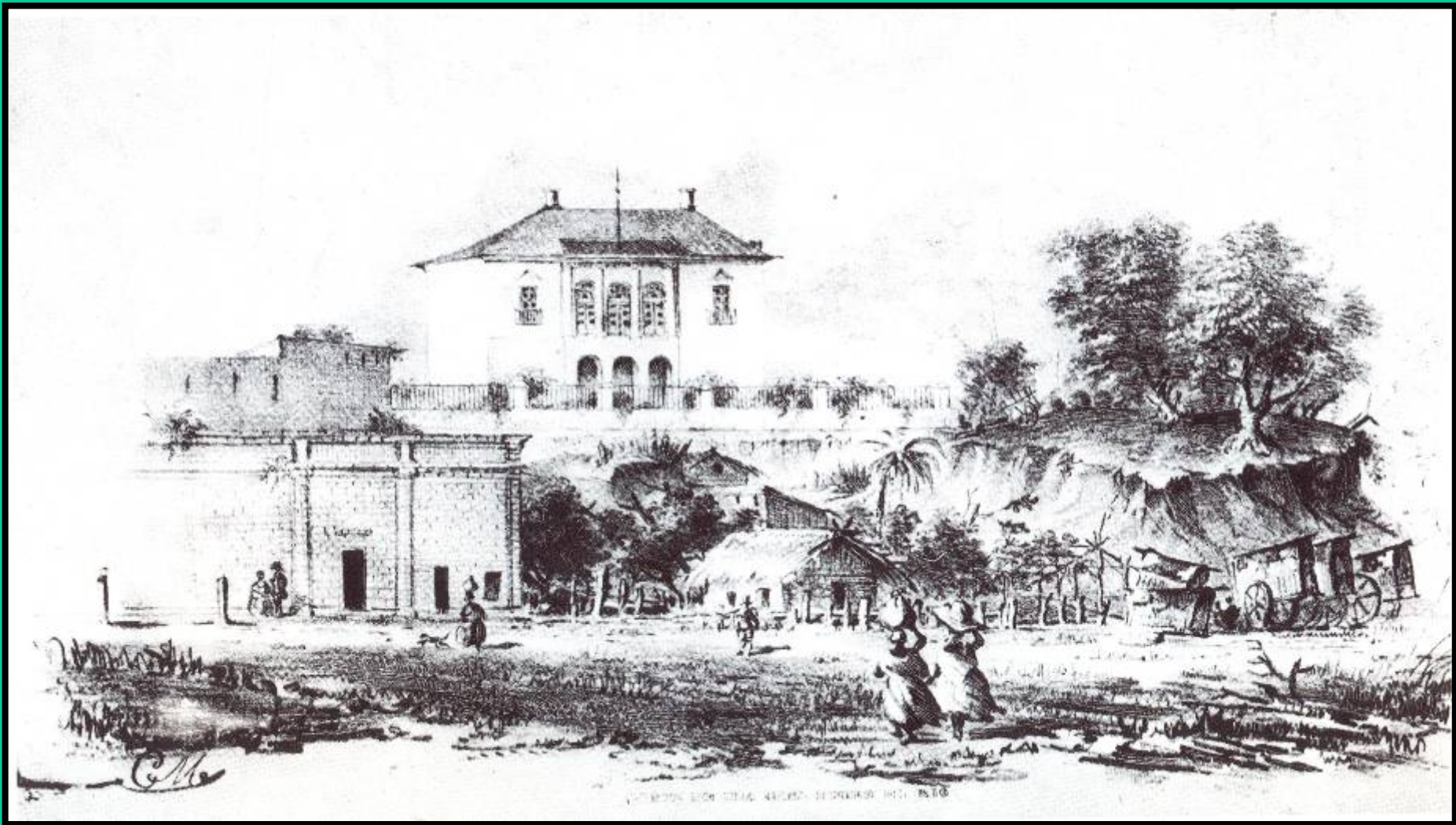




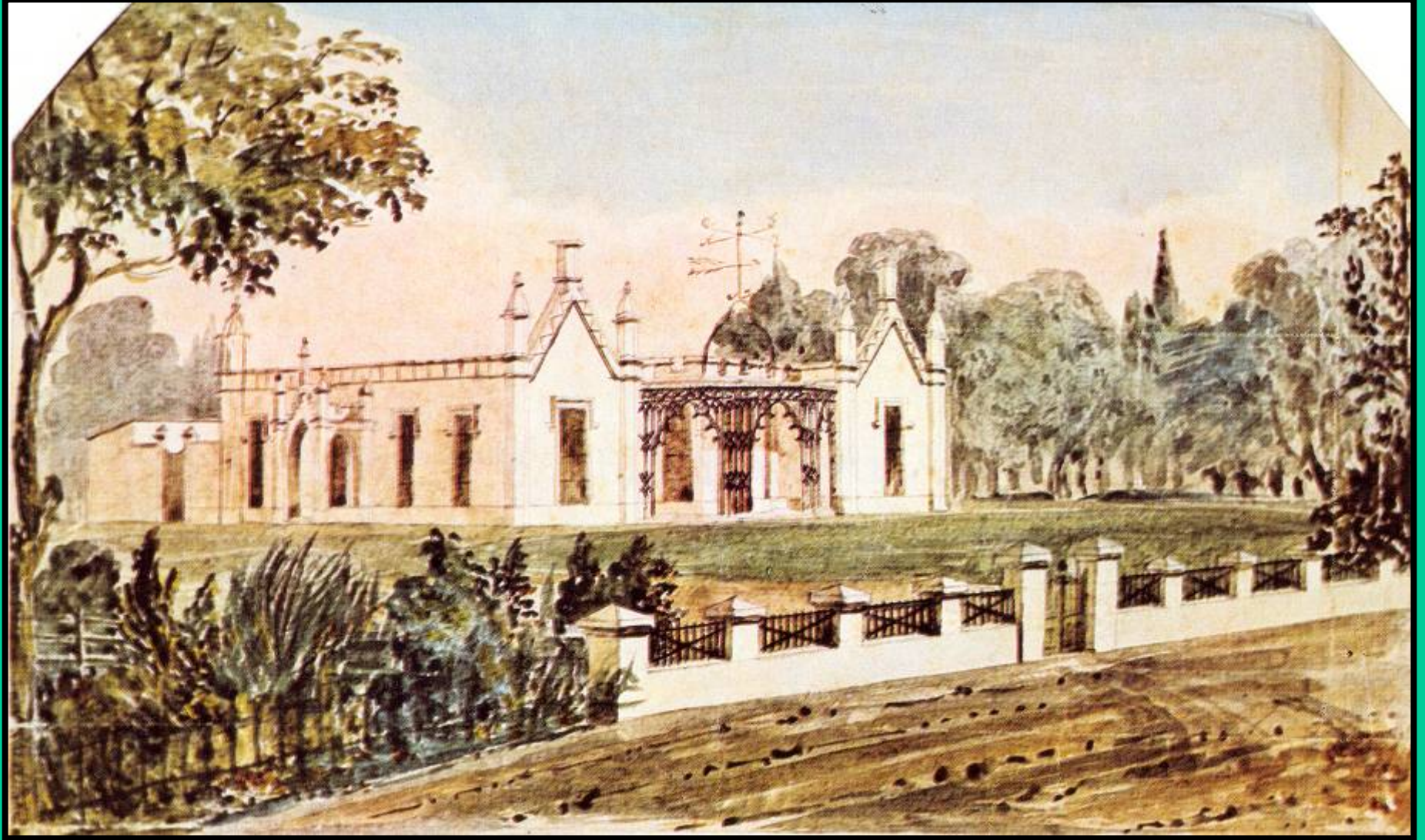


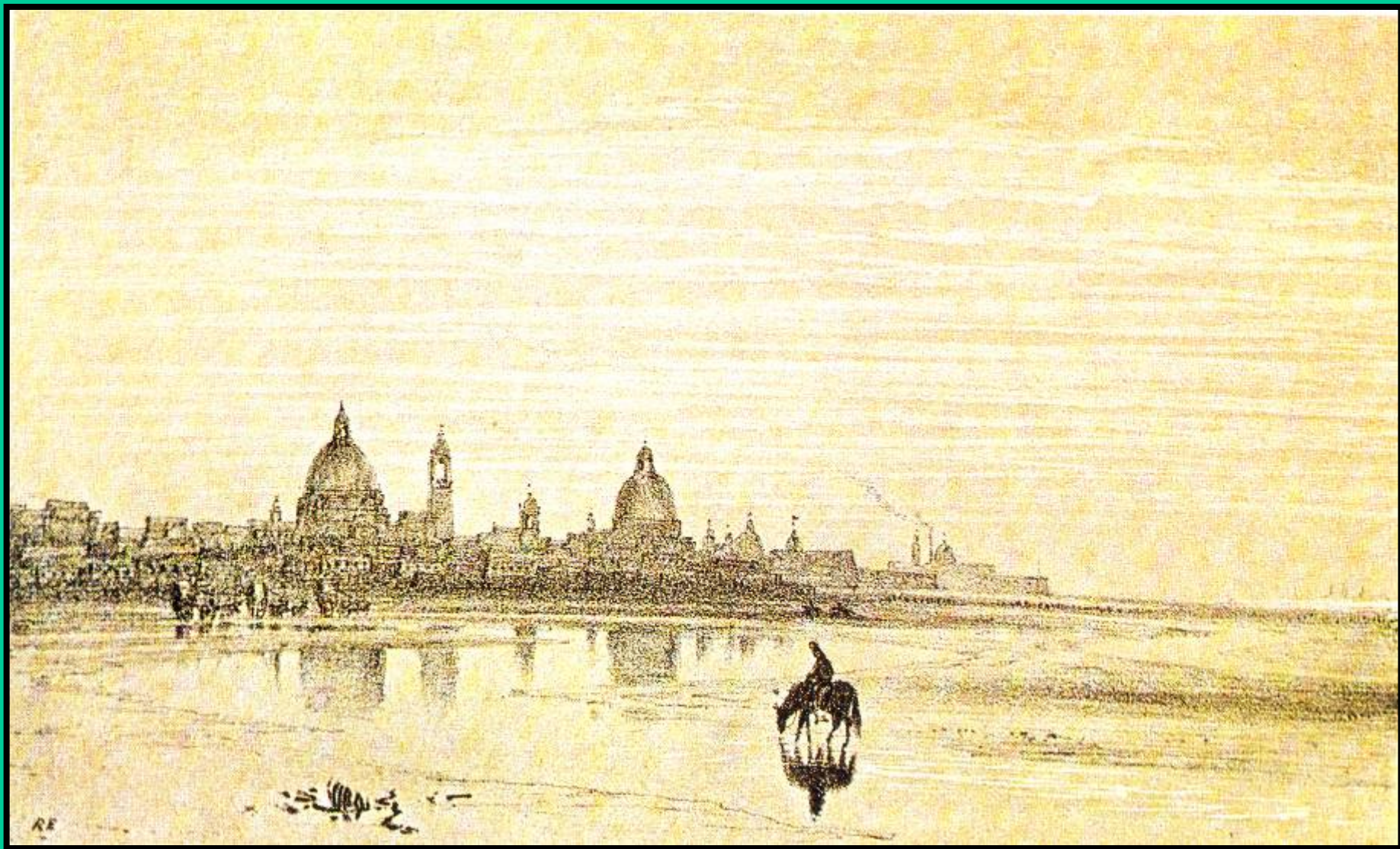






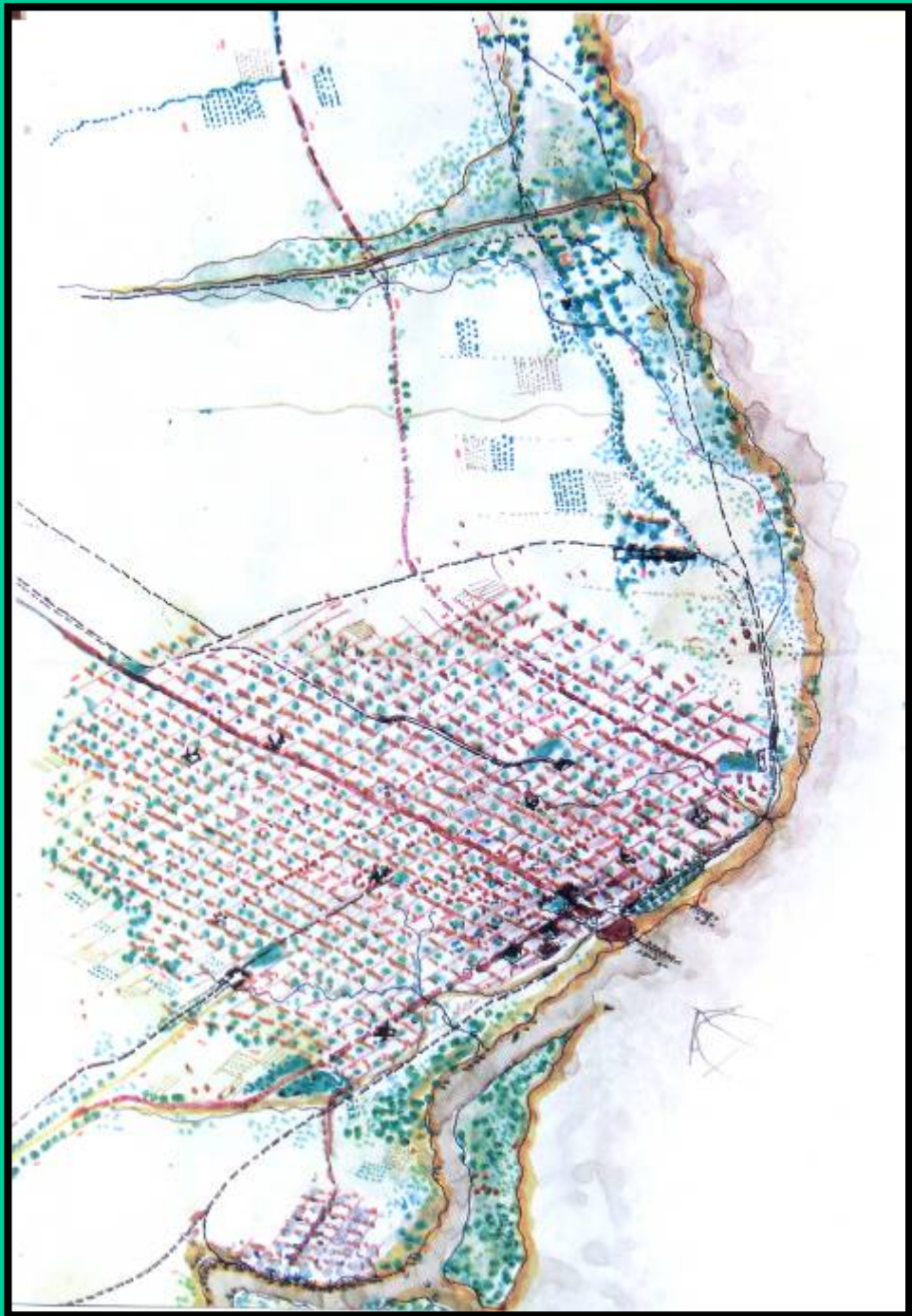
LONDON: BY G. S. & CO. 49, BROADWAY, 1850

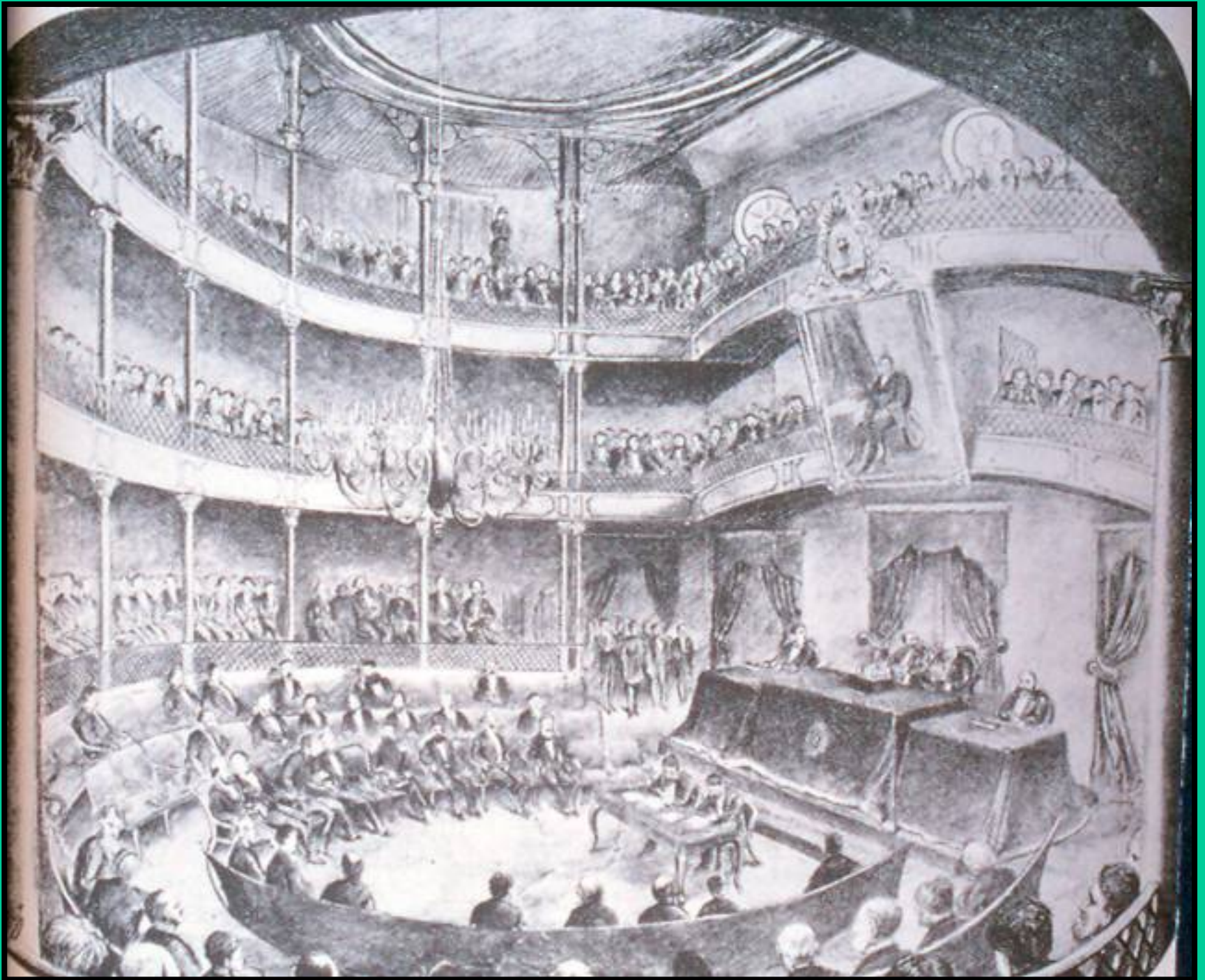


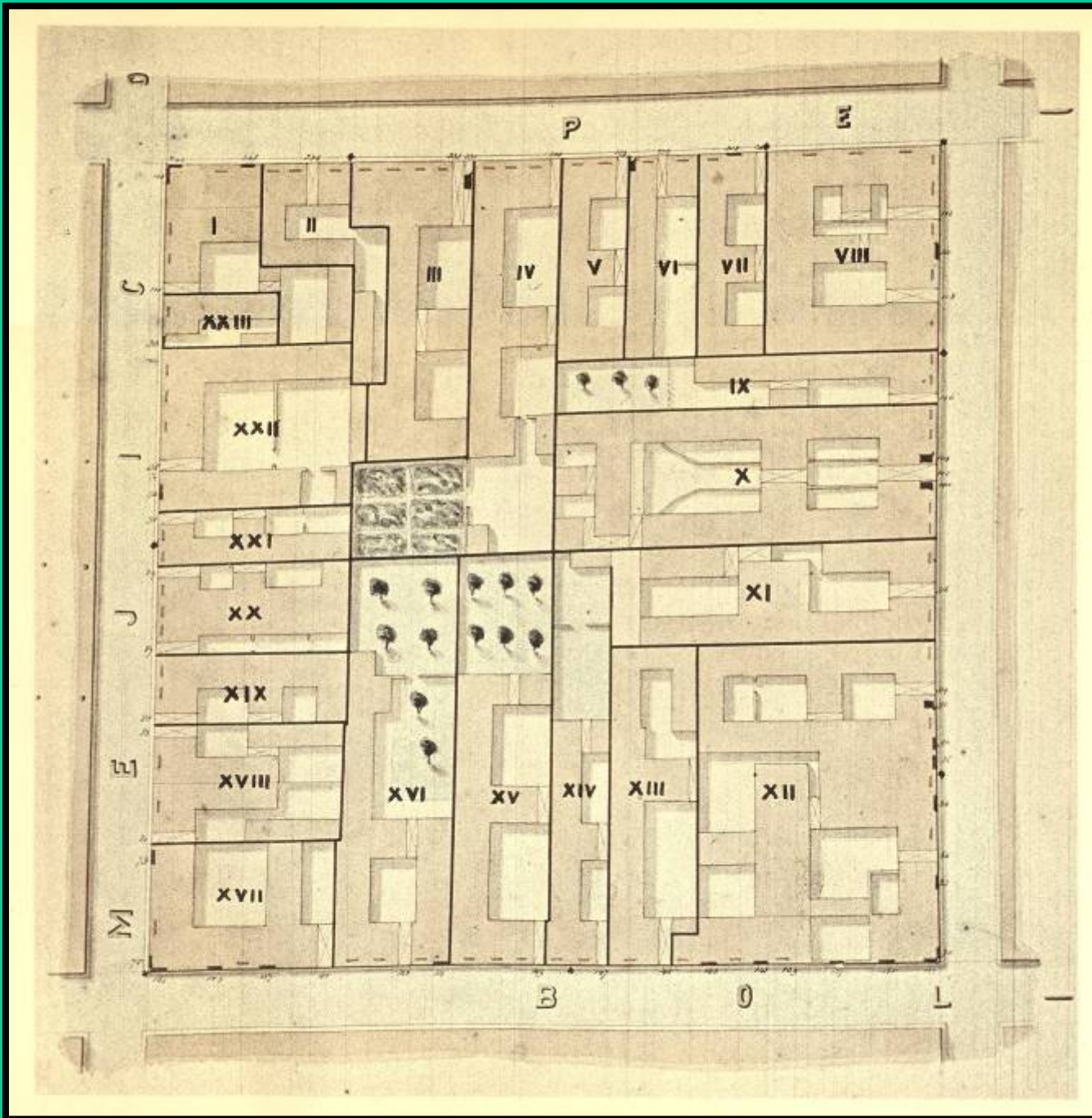






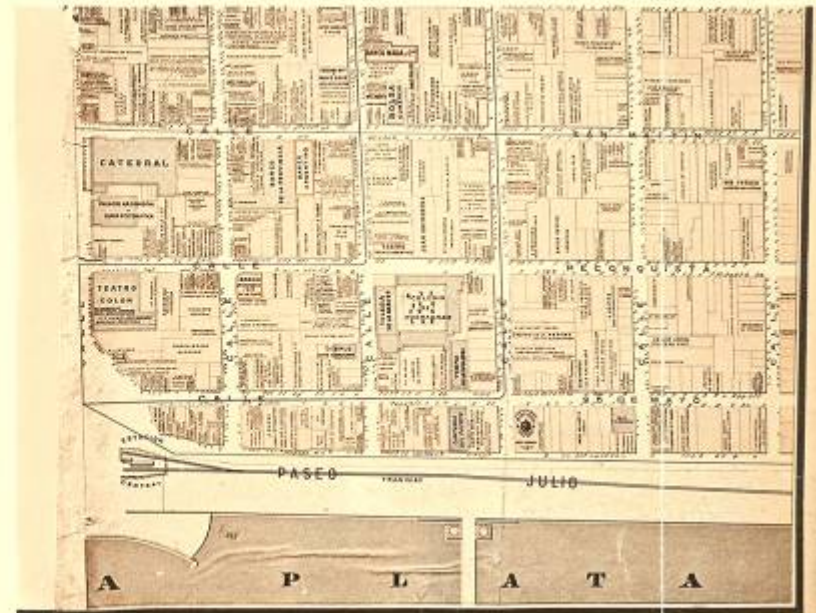
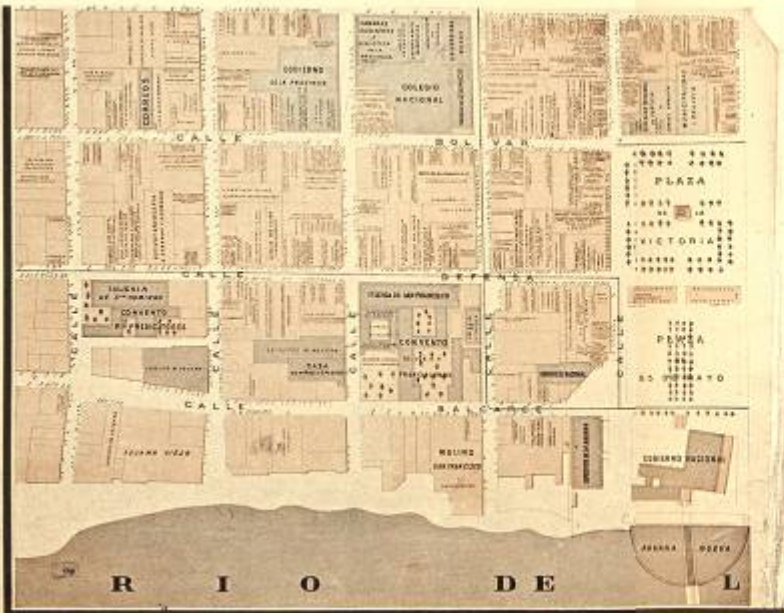
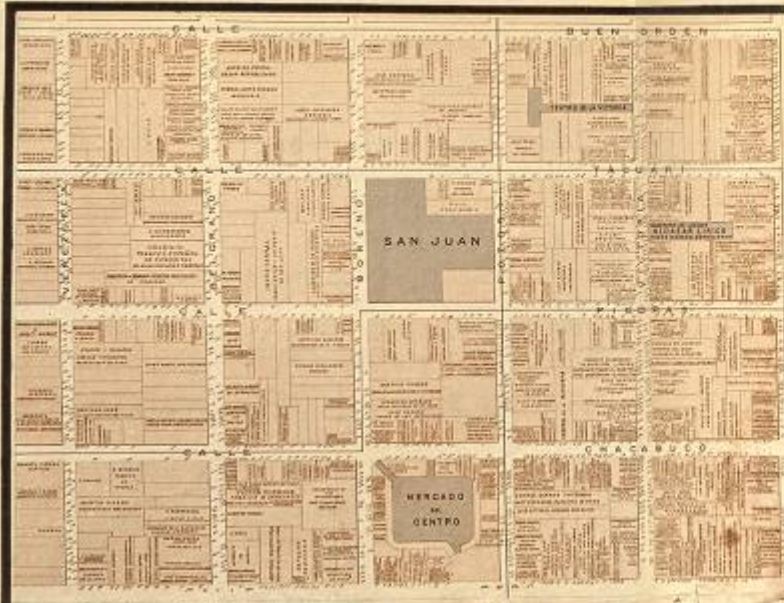






GRAN MAPA MERCANTIL DE

LA CIUDAD DE BUENOS AYRES

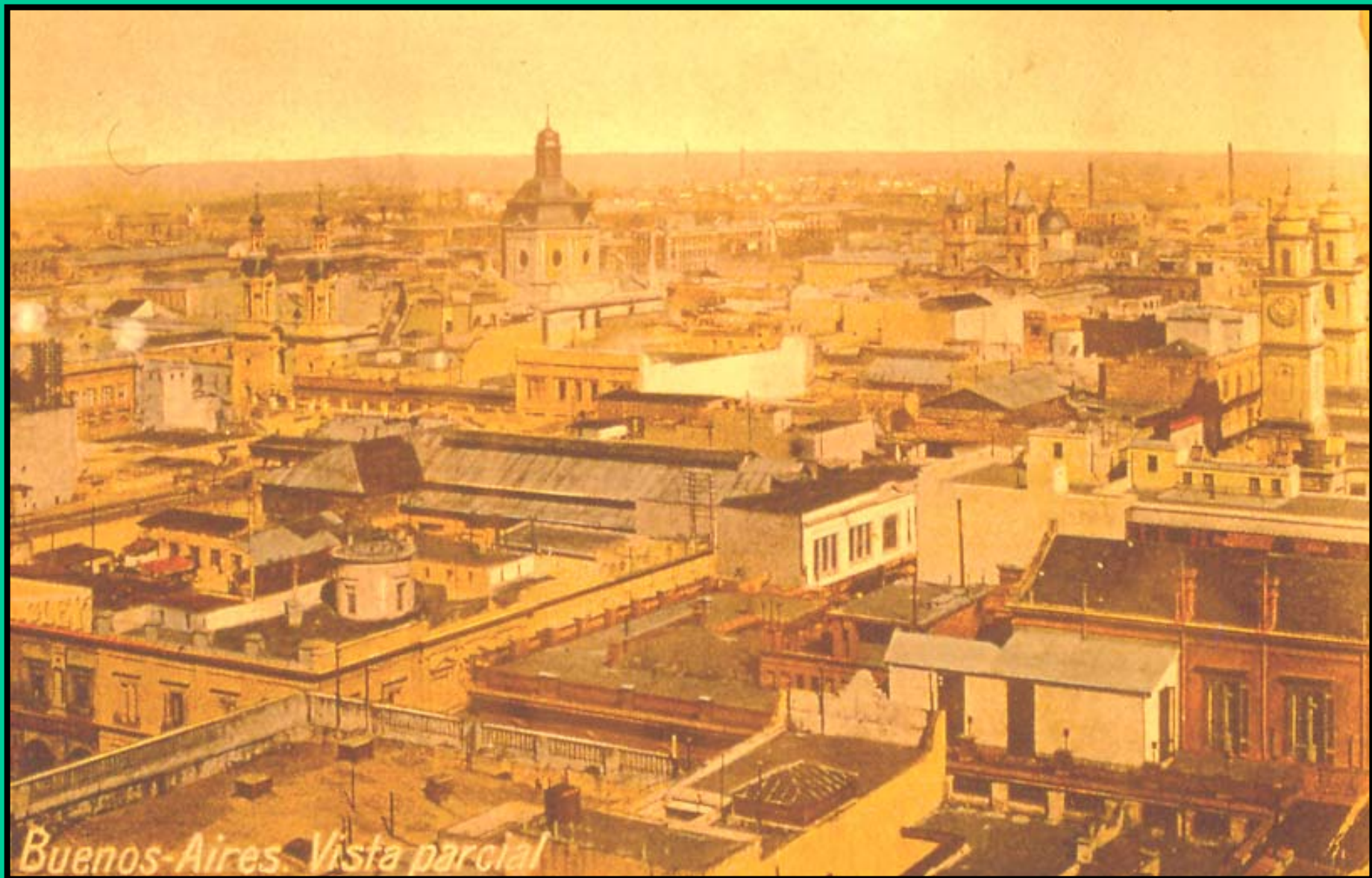


Aguas Corrientes

Ba. Atres. Rep. Argentina







Buenos-Aires. Vista parcial







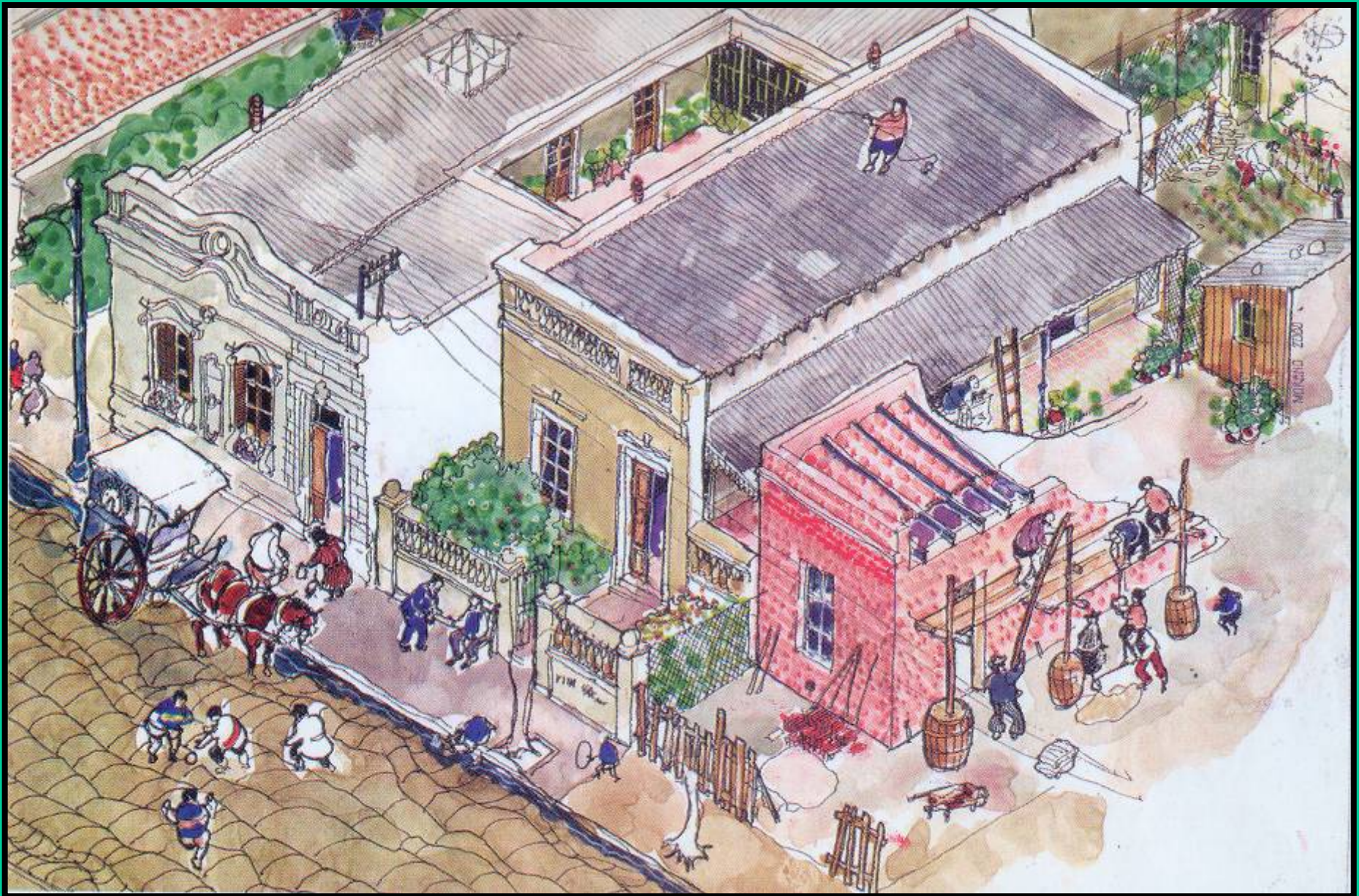














P. HORNBY 2000











SEGUROS DE VIDA

ONAK DE PENSIONES



Avenida de Mayo - B^a Aires

