

# Lección 11

## Las escalas relativas mayores y menores, su relación

---

La escala menor natural utiliza las mismas notas que la escala mayor, excepto que comienza y termina en la, es decir, el sexto grado de la escala. La escala menor natural se construye sobre el sexto grado de una escala mayor dada, y es llamada la relativa menor de la escala mayor. El patrón de tonos y semitonos para la escala menor natural es:

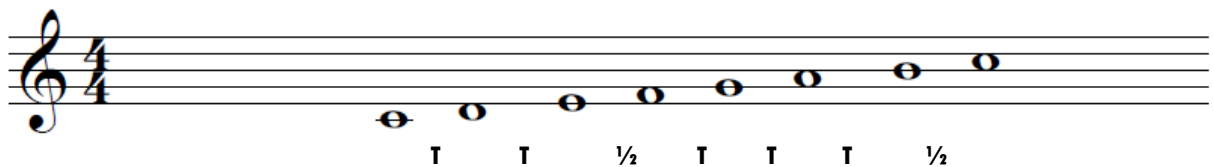
1 Tono -  $\frac{1}{2}$  Tono - 1 tono - 1 tono -  $\frac{1}{2}$  tono - 1 tono - 1 tono

=

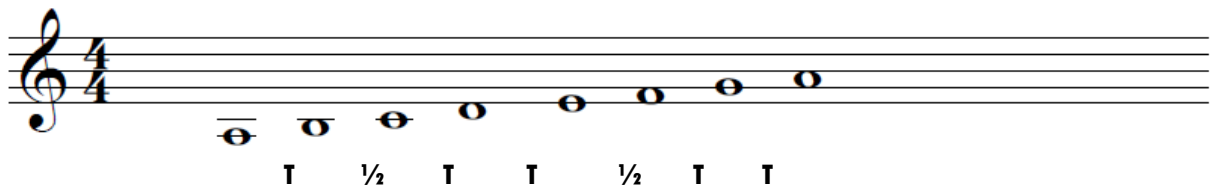
1 -  $\frac{1}{2}$  - 1 - 1 -  $\frac{1}{2}$  - 1 - 1

La escala menor natural de A es la relativa menor de la escala de C mayor.

Escala C mayor



Escala A menor



## Práctica.

Escriba cada escala mayor indicada y luego su relativa menor. La nota en el segundo compás indica la tónica de la relativa menor.

Major

Relative Minor

This musical exercise shows a grand staff with two staves. The first staff is in treble clef and contains a single note, C4, labeled "Major". The second staff is in bass clef and contains a single note, A3, labeled "Relative Minor".

Major

Relative Minor

This musical exercise shows a grand staff with two staves. The first staff is in treble clef and contains a single note, D4, labeled "Major". The second staff is in bass clef and contains a single note, B2, labeled "Relative Minor".

Major

Relative Minor

This musical exercise shows a grand staff with two staves. The first staff is in treble clef and contains a single note, E4, labeled "Major". The second staff is in bass clef and contains a single note, C3, labeled "Relative Minor".

Major

Relative Minor

This musical exercise shows a grand staff with two staves. The first staff is in treble clef and contains a single note, F4, labeled "Major". The second staff is in bass clef and contains a single note, D3, labeled "Relative Minor".

Major

Relative Minor

This musical exercise shows a grand staff with two staves. The first staff is in treble clef and contains a single note, G4, labeled "Major". The second staff is in bass clef and contains a single note, E3, labeled "Relative Minor".

Major

Relative Minor

This musical exercise shows a grand staff with two staves. The first staff is in treble clef and contains a single note, A4, labeled "Major". The second staff is in bass clef and contains a single note, F3, labeled "Relative Minor".

# Tríada menor



La **tríada menor** puede ser formada descendiendo la tercera de la tríada mayor un semitono. A partir de la tónica los intervalos son una tercera menor y una quintajusta

The image displays six triads in treble clef, arranged in three rows. Each row contains a major triad on the left and a minor triad on the right. The intervals between the notes are labeled as follows:

- C Major Triad:** C (1), E (3M), G (5J)
- C Minor Triad:** C (1), Eb (3m), G (5J)
- D Major Triad:** D (1), F# (3M), A (5J)
- D Minor Triad:** D (1), F (3m), A (5J)
- Bb Major Triad:** Bb (1), D (3M), F (5J)
- Bb Minor Triad:** Bb (1), Db (3m), F (5J)

## Construcción

C    D    Eb    F    G

1                    3m                    5J

3m + 3M

The image shows a major triad (C, E, G) on a staff, followed by a minor triad (C, Eb, G) on the same staff, illustrating the construction of the minor triad by lowering the third note by a semitone.

### Memorizar:

Triada menor:            1        3m        5J

                                  3m + 3M

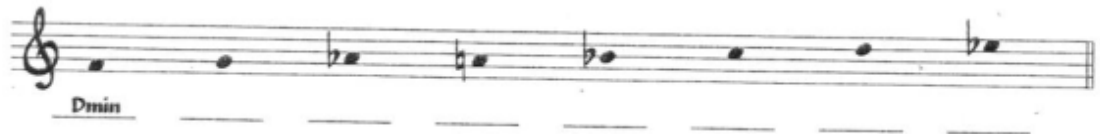
## Práctica

1. Deduzca las tríadas menores a partir de la tríada mayor dada. El primer ejercicio está resuelto.



Two musical staves in 4/4 time. The top staff is in treble clef and the bottom staff is in bass clef. The key signature has one sharp (F#). The first staff shows a sequence of four triads: a major triad (F#, A, C), a minor triad (A, C, E), a major triad (C, E, G), and a minor triad (E, G, B). The second staff shows a sequence of four triads: a major triad (F#, A, C), a minor triad (A, C, E), a major triad (C, E, G), and a minor triad (E, G, B).

2. Las siguientes notas son las terceras de una tríada menor. ¿De cuál?



A musical staff in treble clef showing a sequence of seven notes: F#, A, C, E, G, B, D. Below the staff, the first note is labeled "Dmin" and there are seven dashed lines for identification.

# Lección 11: Praxis musical

Serie

Notas a trabajar  
d - r - m - f - s



Lectura melódica:

German dance, D783, #7 - Schubert

1)

Musical notation for German dance, D783, #7 - Schubert. The piece is in 3/4 time. The first staff begins with a repeat sign and contains four measures. The second staff continues the melody and ends with a double bar line and a 4/4 time signature.

Anonimo - Tennessee

2)

Musical notation for Anonimo - Tennessee. The piece is in 4/4 time. The first staff begins with a repeat sign and contains four measures. The second staff continues the melody and ends with a double bar line and a 2/4 time signature.

Anonimo - España

3)

Musical notation for Anonimo - España. The piece is in 2/4 time. The first staff begins with a repeat sign and contains four measures. The second staff continues the melody and ends with a double bar line.

# Sol Fa

Notas a trabajar

d - r - m - f - s

Cantar las alturas con las rítmicas propuestas.

1.

d r m f s f s m d r m

f f s f f m r m d

2.

d m r m s s f m r

d r m f m s f m r d

Cantar las alturas improvisando la rítmica y respirando en los espacios.

1. Do Mi Fa Sol Re Do Re Mi Sol Fa Sol Fa Mi Re Mi Sol Mi Do Re Mi Sol Fa Mi Re Do

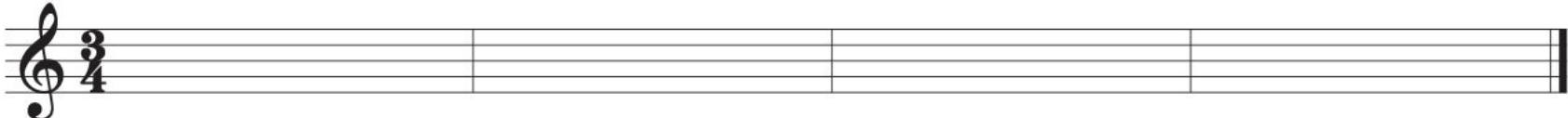
2. Do Sol Fa Sol Re Do Sol Mi Re Mi Sol Fa Mi Re Sol Fa Mi Re Do Sol Do

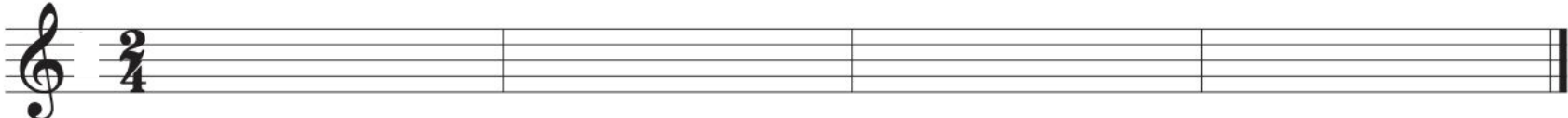
3. Mi Sol Mi Sol Do Sol Fa Mi Re Do Re Mi Sol Fa Sol Fa Fa Mi Do Re Do Re Do

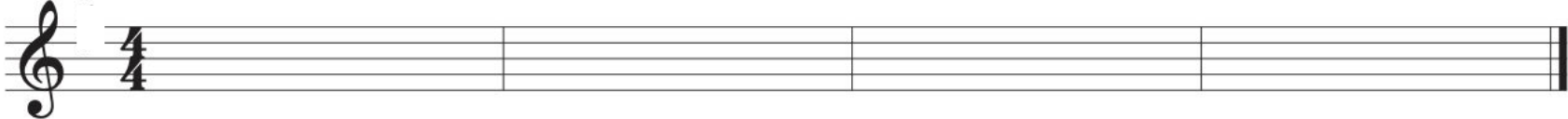
4. Sol Do Sol Do Sol Fa Mi Re Mi Sol Fa Mi Do Re Mi Re Sol Fa Mi Re Sol Do

# Ejercicio de Composición

Escriba melodías usando los siguientes grupos de notas: **1) d - r - m - f - s**  
Después cante sus melodías y realice dictados con ellas.

1) 

2) 

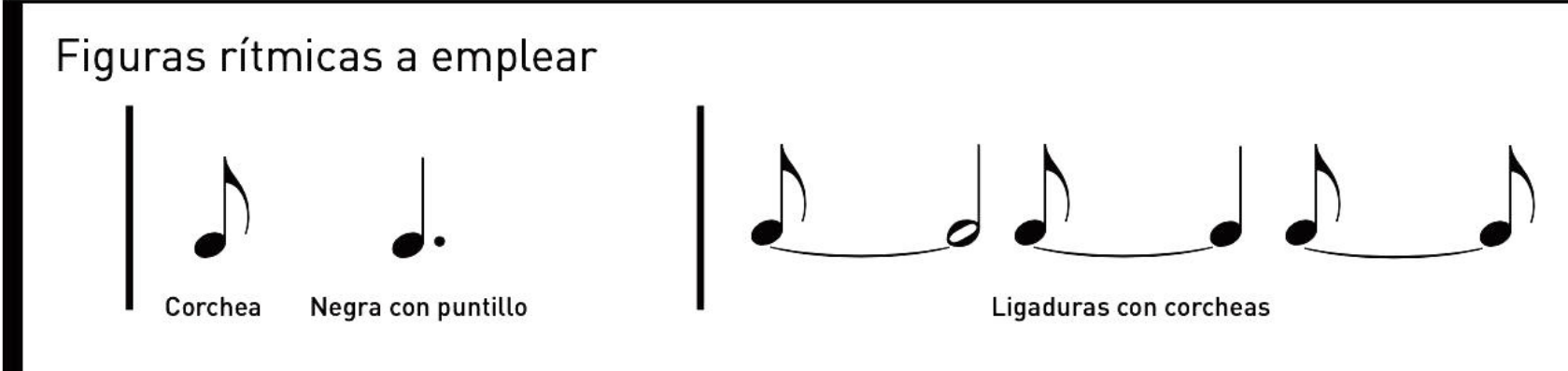
3) 



# Lectura Rítmica

Las figuras correspondientes a este capítulo se muestran a continuación:

Figuras rítmicas a emplear



Corchea    Negra con puntillo    Ligaduras con corcheas

Fig. 8-1 *Ligadura con corcheas*

Nombre Konokol

Ka-----    Ka-----    Ta-----    Ka-----



Nombre Konokol

Ta    Ka-----



Ta    Ka-----



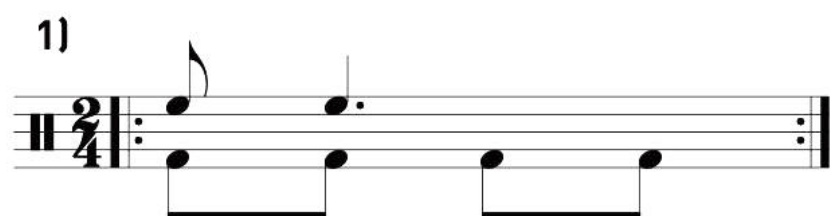
Es equivalente a


Ta    Ka-----



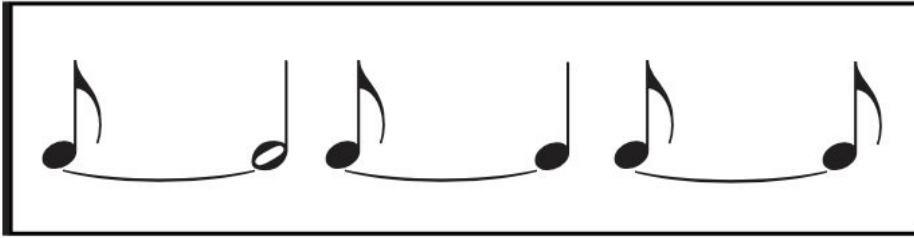
## Ejercicios Preparatorios 8.1

Las siguientes células rítmicas sirven como preparatorio a los ejercicios rítmicos de la sección. Deben practicarse cada uno por separado.

1) 

2) 

# Ejercicio Rítmico



A una voz

1)

2)

3)

4)

5)

6)



## A dos voces

1)

Exercise 1 is in 2/4 time. The first staff (treble clef) starts with a quarter note G4, followed by quarter notes A4, B4, and C5. The second staff (bass clef) starts with a quarter note G3, followed by quarter notes F3, E3, and D3. Both staves have a repeat sign at the end.

2)

Exercise 2 is in 3/4 time. The first staff (treble clef) starts with a quarter note G4, followed by quarter notes A4, B4, and C5. The second staff (bass clef) starts with a quarter note G3, followed by quarter notes F3, E3, and D3. Both staves have a repeat sign at the end.

3)

Exercise 3 is in 4/4 time. The first staff (treble clef) starts with a quarter note G4, followed by quarter notes A4, B4, and C5. The second staff (bass clef) starts with a quarter note G3, followed by quarter notes F3, E3, and D3. Both staves have a repeat sign at the end.

4)

Exercise 4 is in 2/4 time. The first staff (treble clef) starts with a quarter note G4, followed by quarter notes A4, B4, and C5. The second staff (bass clef) starts with a quarter note G3, followed by quarter notes F3, E3, and D3. Both staves have a repeat sign at the end.

A dos voces

1) 

2) 

3) 

4) 