

Lección 12

La escala menor melódica ascendente (Bachiana).

La escala menor melódica ascendente (ascending melodic minor) es como la escala menor natural, excepto que el sexto y el séptimo grado se encuentran medio tono ascendido. Se asemeja también a una escala mayor con el tercer grado descendido un semitono.

la estructura de la escala es:

1 Tono - ½ Tono - 1 tono - 1 tono - 1 tono - 1 tono - 1/2 tono

=

1 - ½ - 1 - 1 - 1 - 1 - ½

The image shows two musical staves in treble clef. The top staff is labeled 'C Menor Natural' and shows the notes C, D, E-flat, F, G, A-flat, B-flat, C. Below the notes are fingerings: 1, 2M, 3m, 4J, 5J, 6m, 7m, 8J. The bottom staff is labeled 'C Menor Melódica' and shows the notes C, D, E-flat, F, G, A, B, C. Below the notes are fingerings: 1, 2M, 3m, 4J, 5J, 6M, 7M, 8J. Brackets below the bottom staff indicate intervals: 1 (between 1 and 2M), 1/2 (between 2M and 3m), 1 (between 3m and 4J), 1 (between 4J and 5J), 1 (between 5J and 6M), 1 (between 6M and 7M), and 1/2 (between 7M and 8J). Vertical dashed lines connect the 6th and 7th notes of both scales.

Memorizar:

La estructura de la escala menor melódica ascendente (bachiana) es: 1 - ½ - 1 - 1 - 1 - 1 - ½

Práctica

1. Escriba la escala menor natural y luego la escala menor melódica ascendente.

G Minor: Natural

Melodic

This block contains two musical staves. The top staff is in treble clef and the bottom staff is in bass clef. The left half of each staff is labeled 'G Minor: Natural' and the right half is labeled 'Melodic'. The staves are currently empty for the student to write the scales.

B Minor: Natural

Melodic

This block contains two musical staves. The top staff is in treble clef and the bottom staff is in bass clef. The left half of each staff is labeled 'B Minor: Natural' and the right half is labeled 'Melodic'. The staves are currently empty for the student to write the scales.

E Minor: Natural

Melodic

This block contains two musical staves. The top staff is in treble clef and the bottom staff is in bass clef. The left half of each staff is labeled 'E Minor: Natural' and the right half is labeled 'Melodic'. The staves are currently empty for the student to write the scales.

D Minor: Natural

Melodic

This block contains two musical staves. The top staff is in treble clef and the bottom staff is in bass clef. The left half of each staff is labeled 'D Minor: Natural' and the right half is labeled 'Melodic'. The staves are currently empty for the student to write the scales.

C Minor: Natural

Melodic

This block contains two musical staves. The top staff is in treble clef and the bottom staff is in bass clef. The left half of each staff is labeled 'C Minor: Natural' and the right half is labeled 'Melodic'. The staves are currently empty for the student to write the scales.

F Minor: Natural

Melodic

This block contains two musical staves. The top staff is in treble clef and the bottom staff is in bass clef. The left half of each staff is labeled 'F Minor: Natural' and the right half is labeled 'Melodic'. The staves are currently empty for the student to write the scales.

La escala menor melódica (barroca)

Escala menor melódica tradicional

La escala menor melódica tradicional se utilizó en el barroco y es una combinación de escalas menores ya vistas. Ascende como la escala Melódica menor ascendente (bachiana) y desciende como la escala menor natural



C Traditional Melodic Minor


1 2 ̣3 4 5 ̣6 ̣7 8 8 ̣7 ̣6 5 4 ̣3 2 1

Escala melódica menor ascendente - Bachiana **Escala menor natural**

Detailed description: A musical staff in treble clef showing the C Traditional Melodic Minor scale. The notes are C, D, E, F, G, A-flat, B-flat, C. The ascending part is marked with fingerings 1-2-3-4-5-6-7-8. The descending part is marked with fingerings 8-7-6-5-4-3-2-1. The scale is divided into two parts: the ascending Bachian scale and the natural descending scale.

Menor Bachiana (Menor melódica ascendente)

La escala menor melódica real es otra denominación para lo que ya conocemos como Menor Melódica Ascendente (Menor Bachiana). Esta escala asciende y desciende en la forma de la escala melódica menor ascendente. Nosotros por motivos prácticos la denominaremos Bachiana.



C Real Melodic Minor

1 2 ̣3 4 5 ̣6 ̣7 8 8 ̣7 ̣6 5 4 ̣3 2 1
Do Re Me Fa Sol La Ti Do Do Ti La Sol Fa Me Re Do

Escala melódica menor ascendente - Bachiana

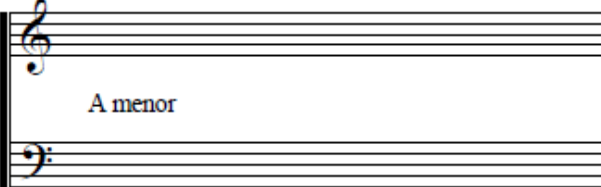
Detailed description: A musical staff in treble clef showing the C Real Melodic Minor scale. The notes are C, D, E, F, G, A-flat, B-flat, C. The ascending part is marked with fingerings 1-2-3-4-5-6-7-8. The descending part is marked with fingerings 8-7-6-5-4-3-2-1. The scale is labeled as the Bachian ascending scale.

Práctica

1. Escriba el ascenso y el descenso la escala menor melódica tradicional y la escala bachiana.

Melódica menor tradicional

Bachiana (real melódica)

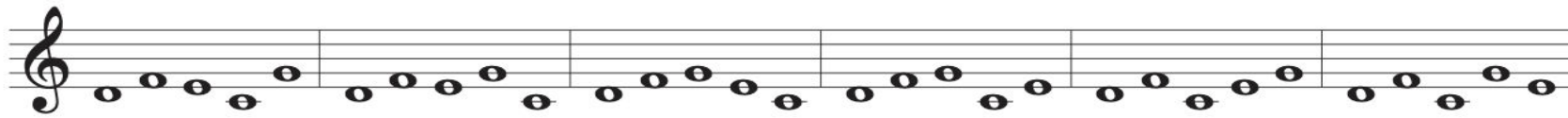
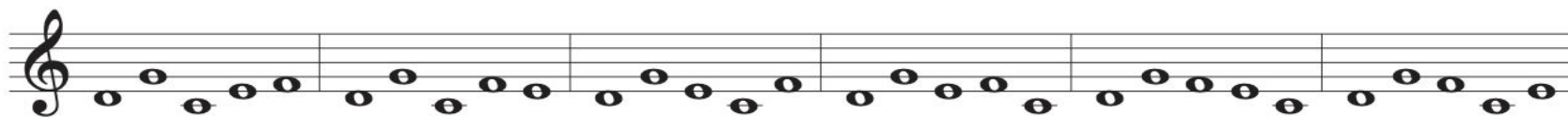
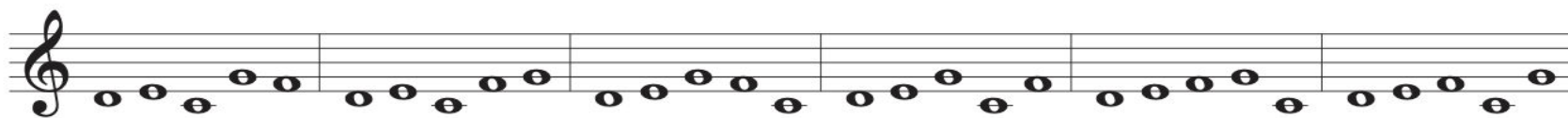
 <p>A menor</p>	
--	--

 <p>D menor</p>	
--	--

 <p>E menor</p>	
--	--


Lección 12: Praxis musical

Notas a trabajar
d - r - m - f - s




Lectura melódica:

1)

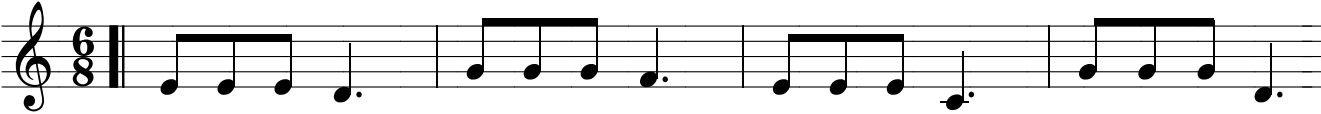


Musical notation for exercise 1, first system. Treble clef, 12/8 time signature. The melody consists of a half note G4, a half note A4, a quarter note B4, a quarter note C5, a quarter note D5, a quarter note E5, a quarter note F5, a quarter note G5, a quarter note F5, a quarter note E5, a quarter note D5, a quarter note C5, a quarter note B4, a half note A4, and a half note G4.

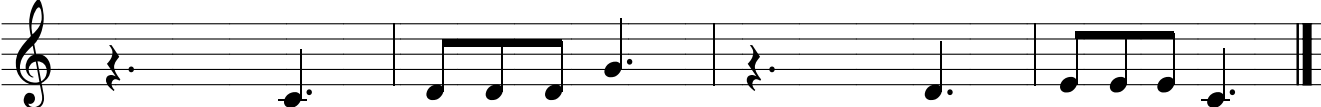


Musical notation for exercise 1, second system. Treble clef, 12/8 time signature. The melody continues with a half note G4, a half note A4, a quarter note B4, a quarter note C5, a quarter note D5, a quarter note E5, a quarter note F5, a quarter note G5, a quarter note F5, a quarter note E5, a quarter note D5, a quarter note C5, a quarter note B4, a half note A4, and a half note G4.

2)




Musical notation for exercise 2, first system. Treble clef, 6/8 time signature. The melody consists of a quarter note G4, a quarter note A4, a quarter note B4, a quarter note C5, a quarter note D5, a quarter note E5, a quarter note F5, a quarter note G5, a quarter note F5, a quarter note E5, a quarter note D5, a quarter note C5, a quarter note B4, a quarter note A4, and a quarter note G4.




Musical notation for exercise 2, second system. Treble clef, 6/8 time signature. The melody continues with a quarter note G4, a quarter note A4, a quarter note B4, a quarter note C5, a quarter note D5, a quarter note E5, a quarter note F5, a quarter note G5, a quarter note F5, a quarter note E5, a quarter note D5, a quarter note C5, a quarter note B4, a quarter note A4, and a quarter note G4.

3)



Musical notation for exercise 3, first system. Treble clef, 2/4 time signature. The melody consists of a quarter note G4, a quarter note A4, a quarter note B4, a quarter note C5, a quarter note D5, a quarter note E5, a quarter note F5, a quarter note G5, a quarter note F5, a quarter note E5, a quarter note D5, a quarter note C5, a quarter note B4, a quarter note A4, and a quarter note G4.



Musical notation for exercise 3, second system. Treble clef, 2/4 time signature. The melody continues with a quarter note G4, a quarter note A4, a quarter note B4, a quarter note C5, a quarter note D5, a quarter note E5, a quarter note F5, a quarter note G5, a quarter note F5, a quarter note E5, a quarter note D5, a quarter note C5, a quarter note B4, a quarter note A4, and a quarter note G4.

Sol Fa

Notas a trabajar
d - r - m - f - s

Cantar las alturas con las rítmicas propuestas.

1.

d m s f d r d m s f

2.

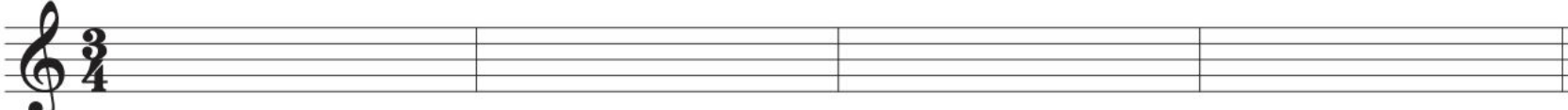
d d r r m r m d d r r m s f

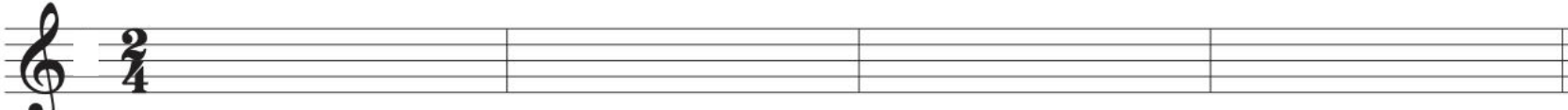
Cantar las alturas improvisando la rítmica y respirando en los espacios.

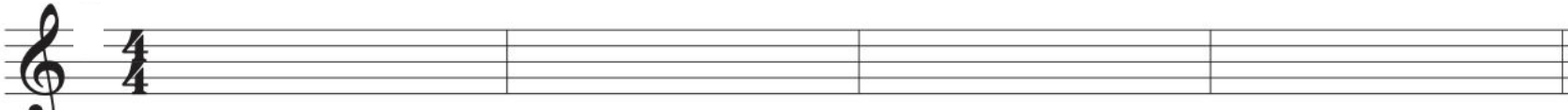
1. Do Mi Fa Re Sol Do Sol Do Sol Fa Mi Re Sol Do Re Mi Fa Re Sol Fa Re Mi Do

2. Mi Do Sol Fa Mi Do Sol Re Mi Do Sol Fa Mi Re Mi Re Sol Fa Re Mi Do

Escriba melodías usando los siguientes grupos de notas: **d - r - m - f - s**
Después cante sus melodías y realice dictados con ellas.

1)  A musical staff with a treble clef and a 3/4 time signature. The staff is divided into four measures by vertical bar lines. The first measure contains a treble clef and the time signature. The rest of the staff is empty.

2)  A musical staff with a treble clef and a 2/4 time signature. The staff is divided into four measures by vertical bar lines. The first measure contains a treble clef and the time signature. The rest of the staff is empty.

3)  A musical staff with a treble clef and a 4/4 time signature. The staff is divided into four measures by vertical bar lines. The first measure contains a treble clef and the time signature. The rest of the staff is empty.

4)  A musical staff with a treble clef and a 3/4 time signature. The staff is divided into eight measures by vertical bar lines. The first measure contains a treble clef and the time signature. The rest of the staff is empty.

Lectura Rítmica

Las figuras correspondientes a este capítulo se muestran a continuación:

Figuras rítmicas a emplear



Semicorchea

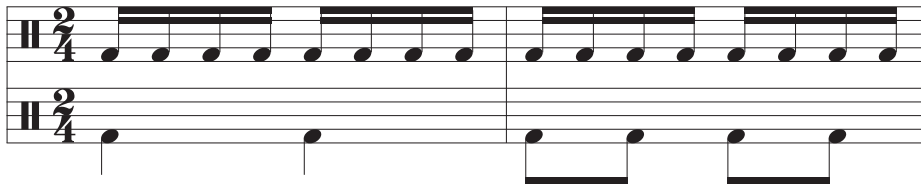
Fig. 9-1 Semicorcheas

Nombre Konokol

Ta Ka Di Mi



Ta Ka Di Mi Ta Ka Di Mi Ta Ka Di Mi Ta Ka Di Mi



→ Cantar

→ Marcar con el pie
→ Marcar con la mano
Metronomo

Ejercicios Preparatorios

Las siguientes células rítmicas sirven como preparatorio a los ejercicios rítmicos de la sección. Deben practicarse cada uno por separado.

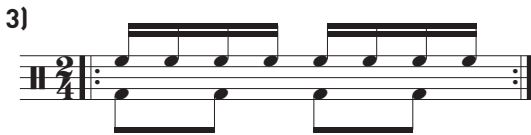
1)



2)



3)



4)



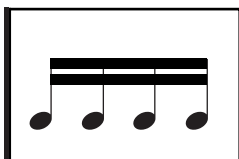
5)



6)



Ejercicio Rítmico 9.1



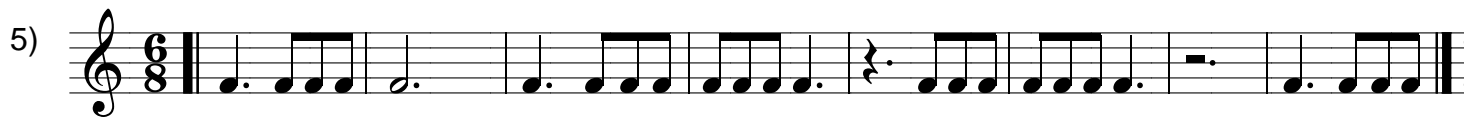
A una voz

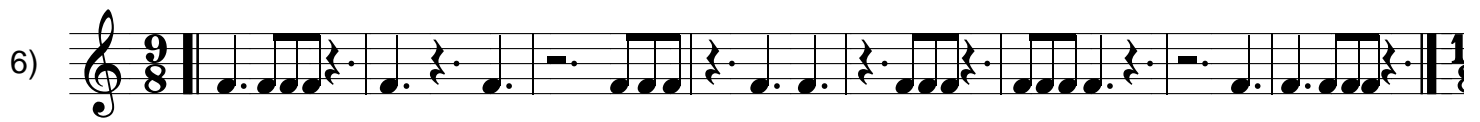
1)

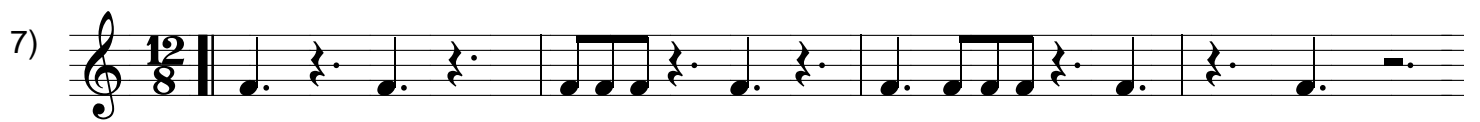
2)

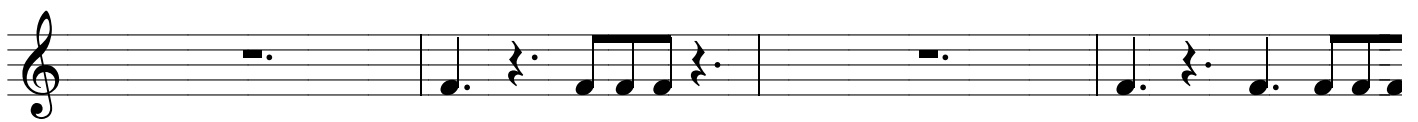
3)

4)

5) 

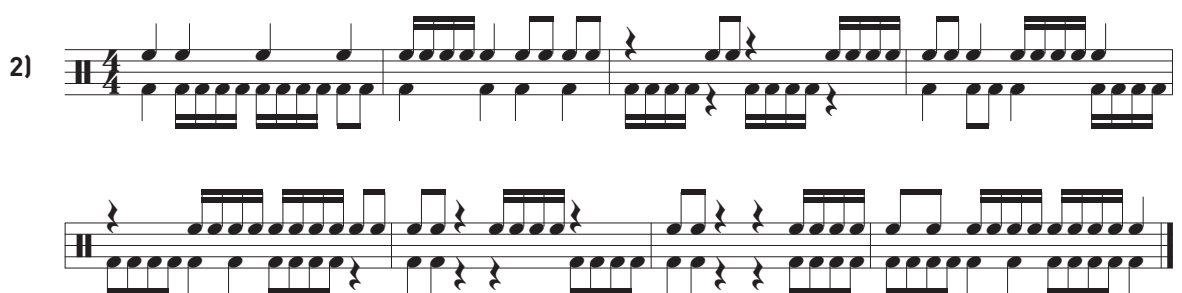
6) 


7) 



A dos voces

1) 

2) 

3) 

4) 

5)

Musical score for exercise 5, 6/8 time signature. The score consists of two staves. The top staff begins with a treble clef and a 6/8 time signature. It contains a sequence of eighth notes in the first two measures, followed by a dotted quarter note and a quarter rest in the third measure, a quarter note in the fourth measure, a dotted quarter note and a quarter rest in the fifth measure, a quarter note in the sixth measure, a dotted quarter note and a quarter rest in the seventh measure, and a quarter note in the eighth measure. The bottom staff begins with a bass clef and a 6/8 time signature. It contains a dotted quarter note and a quarter rest in the first measure, a dotted quarter note and a quarter rest in the second measure, a quarter rest and a dotted quarter note in the third measure, a quarter note in the fourth measure, a sequence of eighth notes in the fifth measure, a dotted quarter note and a quarter rest in the sixth measure, a sequence of eighth notes in the seventh measure, a dotted quarter note and a quarter rest in the eighth measure, and a quarter note in the ninth measure. Both staves end with a double bar line and a repeat sign.

6)

Musical score for exercise 6, 12/8 time signature. The score consists of two staves. The top staff begins with a treble clef and a 12/8 time signature. It contains a dotted quarter note and a quarter rest in the first measure, a dotted quarter note and a quarter rest in the second measure, a dotted quarter note and a quarter rest in the third measure, a dotted quarter note and a quarter rest in the fourth measure, a dotted quarter note and a quarter rest in the fifth measure, a sequence of eighth notes in the sixth measure, a dotted quarter note and a quarter rest in the seventh measure, a dotted quarter note and a quarter rest in the eighth measure, a dotted quarter note and a quarter rest in the ninth measure, and a dotted quarter note and a quarter rest in the tenth measure. The bottom staff begins with a bass clef and a 12/8 time signature. It contains a dotted quarter note and a quarter rest in the first measure, a dotted quarter note and a quarter rest in the second measure, a dotted quarter note and a quarter rest in the third measure, a dotted quarter note and a quarter rest in the fourth measure, a dotted quarter note and a quarter rest in the fifth measure, a sequence of eighth notes in the sixth measure, a dotted quarter note and a quarter rest in the seventh measure, a dotted quarter note and a quarter rest in the eighth measure, a dotted quarter note and a quarter rest in the ninth measure, a dotted quarter note and a quarter rest in the tenth measure, and a dotted quarter note and a quarter rest in the eleventh measure. Both staves end with a double bar line and a repeat sign.

7)

Musical score for exercise 7, 9/8 time signature. The score consists of two staves. The top staff begins with a treble clef and a 9/8 time signature. It contains a sequence of eighth notes in the first measure, a dotted quarter note and a quarter rest in the second measure, a dotted quarter note and a quarter rest in the third measure, a dotted quarter note and a quarter rest in the fourth measure, a sequence of eighth notes in the fifth measure, a dotted quarter note and a quarter rest in the sixth measure, a dotted quarter note and a quarter rest in the seventh measure, a sequence of eighth notes in the eighth measure, and a dotted quarter note and a quarter rest in the ninth measure. The bottom staff begins with a bass clef and a 9/8 time signature. It contains a dotted quarter note and a quarter rest in the first measure, a dotted quarter note and a quarter rest in the second measure, a dotted quarter note and a quarter rest in the third measure, a dotted quarter note and a quarter rest in the fourth measure, a dotted quarter note and a quarter rest in the fifth measure, a dotted quarter note and a quarter rest in the sixth measure, a dotted quarter note and a quarter rest in the seventh measure, a dotted quarter note and a quarter rest in the eighth measure, and a dotted quarter note and a quarter rest in the ninth measure. Both staves end with a double bar line and a repeat sign.